



CANBERRA  
HOSPITAL  
FOUNDATION

# Canberra Hospital Foundation

Annual Report 2023 - 2024



## Acknowledgement of Country

Canberra Hospital Foundation acknowledges the Ngunnawal people as the Traditional Custodians of the ACT, recognising their enduring cultural contributions. We respect their traditional healthcare methods, valuing the wisdom embedded in their practices for centuries.

Canberra Hospital Foundation strives for equitable healthcare outcomes and is dedicated to supporting Aboriginal and Torres Strait Islander communities, incorporating their insights to enhance healthcare practices and promote reconciliation.

## Table of Contents

|                           |    |
|---------------------------|----|
| Our Vision                | 5  |
| Our Values                | 5  |
| Our Role                  | 5  |
| Chair and CEO Report      | 6  |
| Our Governance            | 7  |
| Our Patron                | 8  |
| Our Ambassadors           | 8  |
| Strategic Plan            | 10 |
| Your Impact               | 13 |
| Programs                  | 14 |
| Refurbishments            | 17 |
| Equipment                 | 18 |
| Comfort Care              | 20 |
| Volunteers                | 21 |
| Events and Community      | 25 |
| Philanthropy and Research | 35 |
| Partnerships              | 37 |
| Financial Report          | 38 |

*Front cover image: Rehabilitation patient Paul Mitchell using the Armeo Power with Occupational Therapist Josh Commons*

## Introduction WHO WE ARE

## Our Vision

### Creating exceptional health care together.

We share Canberra Health Services' vision because we work tirelessly to provide them support so they can create exceptional health care every day. Exceptional health care for us is when every person (patients, families, carers and staff) experiences the highest quality health care that is advanced by research, innovation and knowledge - delivered with comfort, hope and understanding.

## Our Role

To develop a community that cultivates gratitude, connection, innovation, and healing, we bridge the generosity of our community with a shared vision of creating exceptional healthcare experiences together.

Contributions take various forms, with innovation through research being a significant way people can enhance patient care. A health service driven by research and best practices improves the environment, upgrades equipment and facilities, and empowers healthcare teams to achieve higher standards of care, ultimately enhancing the health and well-being of our community.

Those who give often do so out of deep gratitude for our healthcare workforce and service. It's also a part of their healing process after the loss of a loved one or a challenging experience with illness.

We instil confidence in our community of donors, assuring them that their gifts support patients in receiving the highest quality care, offering comfort and relief from distress. Everyone in our community plays a vital role, whether large or small, in providing our healthcare workforce with the time, knowledge, and resources they need to create exceptional care.

Working together to create outstanding care helps our community lead healthier and more productive lives.

## Our Values

**What underpins our work.**

### Honesty

Act honestly and truthfully.

### Respect

Act with respect for the dignity of our profession and our organisation, and with respect for the dignity of donors and beneficiaries.

### Integrity

Act openly and with regard to our responsibility for public trust. We will disclose all actual and potential conflicts of interest and avoid any appearance of personal or professional misconduct.

### Empathy

Work in a way that promotes our purpose and encourages others to use the same professional standards and engagement. We shall value individual privacy, freedom of choice and diversity in all forms.

### Transparency

Provide clear reports about the work we do and the way donations are managed and disbursed, including costs and expenses. We will do this in an accurate, timely and comprehensible manner.





# Chair and CEO Report

We are pleased to present the Canberra Hospital Foundation (CHF) Annual Report for the 2023-2024 financial year.

This year has been one of transition and continued progress, with the dedicated leadership of both our outgoing and incoming chairs guiding us through significant milestones.

## ACKNOWLEDGMENT OF OUTGOING CHAIR, DEBORAH ROLFE AM

The first half of this financial year was marked by the leadership of Deborah Rolfe, AM, whose vision and commitment over her 13 years of service helped steer CHF towards new achievements. Under Deborah's guidance, we made significant strides forming a new charitable entity with a revitalised commitment to inspire community giving that creates gratitude, connection, innovation and healing.

We extend our heartfelt gratitude to Deborah for her dedication and service to our mission.

*"Thirteen years ago, I embarked on one of the most rewarding chapters of my professional life. Since 2010, the Canberra Hospital Foundation Board has been a part of my routine and a pivotal part of my heart and soul. The opportunity to serve and contribute to the health and well-being of our community has been a privilege beyond measure. I am proud of the progress we have made together and grateful for the unwavering support of our wonderful donors, partners, and staff."*  
- Deborah Rolfe, AM

## WELCOME INCOMING CHAIR, SUSAN PROCTOR

The second half of the year welcomed Susan Proctor as the new Chair. Building on the strong foundation laid by her predecessor, and with 7 years' service on the CHF Board, Susan has continued to drive CHF's vision forward. Her focus on growing and developing partnerships in our communities and building on CHF's strategic direction has set the stage for exciting future growth and impact.

*"It has been an honour to take on the role of Chair and to continue the important work of supporting healthcare services in our community. I am excited for the future as we explore new opportunities to enhance the well-being of those we serve. With the addition of North Canberra Hospital and Clare Holland House to Canberra Health Services, Canberra Hospital Foundation will evolve to meet the*

*needs of even more Canberrans accessing our health care system. This year, we have extended our reach through corporate and community club partnerships, increasing awareness of the critical role CHF plays in supporting healthcare services to respond effectively to the needs of patients and their families. We remain focused on meeting the needs of a growing public healthcare sector, supporting better outcomes for everyone who relies on it."*  
- Susan Proctor

## 2023-2024 HIGHLIGHTS

### Leadership Transition

Welcomed Susan Proctor as Chair, building on Deborah Rolfe AM's 13 years of impactful leadership.

### Fundraising Event Achievements

Raised \$334,913 on CAN GIVE DAY and \$148,356 at the inaugural Golden Gala.

### Community Impact

Allocated \$1.24 million to patient support, benefiting 64+ healthcare teams and funding 42 programs.

### Major Investments in Healthcare

Delivered advanced robotics, 22 pieces of medical equipment, and 6 refurbished spaces.

### Volunteer Efforts

7,000 comfort items donated and 1,100+ cancer patient transport trips provided

### Philanthropy and Research

Launched the Deborah Rolfe AM Perpetual Grant for Research to drive innovation through research.

### Partnerships

Strengthened collaborations with GIO, Lennox Volkswagen, and hosted a successful partnership initiative with local Clubs through the Compete for OUR HEART Challenge.

### Cancer Care Progress

Advanced the Cancer Wellbeing Space and cultural care programs.

### Community Generosity

Amplified impact through matched funding and expanded Givemas, delivering 8,000 gifts.

# Our Governance

CHF is guided by a volunteer Board of dedicated and passionate professionals who bring a wealth of expertise and commitment to our mission.



Deborah Rolfe AM  
CHAIRPERSON  
RETIRED IN  
FEBRUARY 2024



Susan Proctor  
APPOINTED  
CHAIR IN  
FEBRUARY 2024



Nadia Gabellone  
APPOINTED  
DEPUTY CHAIR IN  
FEBRUARY 2024



Bronwyn Fagan  
CO DEPUTY  
CHAIR, RESIGNED  
IN FEBRUARY  
2024



Peter Munday  
OAM



Dion Bisa



Dr Tony Lafferty  
RESIGNED  
FEBRUARY 2024



Prof. Robin  
Stuart-Harris



Kerri Hartland



Matthew Whittaker



Cathie O'Neill  
APPOINTED  
DIRECTOR  
IN FEBRUARY 2024

## Expanded Reach

Incorporated North Canberra Hospital and Clare Holland House into CHF's support network, serving more Canberrans.

## SHARED VISION AND FUTURE OUTLOOK

Together, the combined leadership of Deborah and Susan has positioned CHF for a promising future. As we reflect on this year's achievements, we are more committed than ever to our mission of transforming healthcare through philanthropy. We look forward to building on our successes and creating even greater impact in the year ahead.

I would like to take this opportunity to thank the Board members for their support, hard work and dedication as we work together to deliver our strategic vision. This year we welcomed Cathie O'Neill to our Board and farewelled two long term Board members, Bronwyn Fagan and Dr Tony Lafferty, both of whom have dedicated many years to CHF Board. I would like to take this opportunity to sincerely thank them for their exceptional service on the CHF board and the expertise they have brought over many years.

Thank you to all our supporters, donors, partners, and staff who make our work possible. Your generosity and dedication continue to be the driving force behind our efforts to improve healthcare outcomes for our community.

**We are incredibly grateful for your generous support. You are champions in the healing journey of countless people in our community; every gift, every gesture of support has helped to transform healthcare to ensure that every moment does count and is met with the best possible care, comfort, and compassion for every person. Thank you.**

Helen Falla  
CEO





## Our Patron

### Her Excellency Mrs Linda Hurley

Her Excellency Mrs Linda Hurley (nee McMartin) was born and raised in Sydney. She was educated at Kingsgrove High School and became a teacher in 1976.

She married David Hurley in 1977. Throughout their marriage, Mrs Hurley has supported her husband throughout his career on various postings in Australia and overseas, including the United States, the United Kingdom, Germany and Malaysia.

Mrs Hurley's career in education has been in both the public and private school systems until her retirement from full-time teaching in July 2011. She has been an active community member as a Pastoral Carer at the Canberra Hospital and Hospice.

Mrs Hurley holds a Bachelor of Education from the University of Canberra. Mrs Hurley has an interest in the Arts, especially music. She is passionate about singing and showing how singing, especially in a group, can positively impact individuals and the community.



Mrs Hurley is a member and Patron of 'Solid Rock', a Christian Ministry to women in Defence. She has been a member of the St Andrew's Presbyterian Church choir in Canberra and is a member of the Australian Military Wives Choir. Mrs Hurley is dedicated to championing causes that are developing new technologies to recycle rubbish and ways to reduce our use of plastic, particularly plastic packaging and plastics used for single-use items, which are not only harmful to the environment but add unnecessarily to landfill sites. Their Excellencies have three children: Caitlin, Marcus and Amelia.

## Our Ambassadors

### Deborah (Debbie) Rolfe AM

Deborah (Debbie) Rolfe AM has been an instrumental figure at Canberra Hospital Foundation for over a decade, serving as Chair of the Board from 2010-2024 and from February 2024 as CHF's Ambassador. Her leadership and unwavering dedication have been pivotal to the CHF's growth and its mission to support the wellbeing of patients and their families across the Canberra region.



Deb Rolfe and Hearty - CAN GIVE DAY 2023

Under Debbie's guidance, CHF has expanded its ability to fund crucial healthcare projects, from specialised equipment and therapeutic programs to enhancements in patient care spaces, directly impacting thousands of lives each year. Debbie's commitment to the community and her philanthropic passion have become cornerstones of CHF's ongoing success.

Reflecting on her journey with CHF, Debbie considers it one of the most meaningful chapters of her professional life.

*"The opportunity to serve and contribute to the health and wellbeing of our community has been a privilege beyond measure."* - **Debbie Rolfe OAM**

Her 13-year dedication to CHF exemplifies her deep sense of responsibility and passion for healthcare advocacy. Her legacy will continue in her role as Ambassador as she continues to support Canberra and the surrounding region with access to exceptional healthcare.

### Leo Sayer

Leo Sayer, a celebrated singer and Ambassador for CHF since 2020, extends his influence far beyond the stage. Born Gerard Hugh Sayer in 1948, his commitment to humanitarian causes is evident through various activities with CHF.

In hospital visits, Leo's warm presence and musical performances have brought joy and solace to patients experiencing cancer and their loved ones. His belief in the healing power of music has manifested in intimate performances within hospital wards, creating an atmosphere of resilience and inspiration.



Leo sings and dances with cancer patient Kay at Canberra Region Cancer Centre

*"[My music] is providing something that isn't taking away from any of the treatment that's going on. It's providing something that's just putting a smile on peoples' faces. We're not healing people with music, but we are making them feel better about their healing."* - **Leo Sayer**

Beyond musical endeavours, Leo consistently participates in our fundraising events and awareness campaigns. His involvement goes beyond the limelight, advocating tirelessly for increased resources and public awareness about the challenges faced by those who find themselves in hospital.

A vocal advocate for medical research and innovation, Leo supports groundbreaking projects within the CHF framework through his participation. His role reflects a profound belief in the transformative potential of art and community in providing our community hope, comfort and peace.

### Mahalia Barnes

Born into Australian rock royalty and influenced by the music her father, Jimmy Barnes, recorded and played, Mahalia naturally began singing at a very young age. As of 2024, Mahalia has become one of CHF's newest Ambassadors.

Mahalia has been a sought after session vocalist for over 20 years, having toured and recorded as a vocalist with artists such as Liam Gallagher, George Benson, Joe Bonamassa, Beth Hart, Kirk Fletcher, Ash Grunwald and Lachy Doley to name just a few.

As an artist, she's drawn to guitar-driven gutsy soul, rock and blues, and is inspired by acts like Ike and Tina Turner and legendary queen of soul Aretha Franklin.

Mahalia and her band The Soul Mates have recorded and released several albums, singles and EPs over the years, including their tribute to Betty Davis featuring US blues rock guitarist Joe Bonamassa, reaching the top 10 on the billboard Blues charts in the US.

Mahalia has experienced first hand what it is like to have a loved one in hospital and recognises the hard working and wonderful healthcare teams. Being an Ambassador offers Mahalia a lovely way to say thank you and support not only people going through similar journeys as those of her family members but also to acknowledge the expert medical teams and how research impacts everyday care.



Mahalia has experienced first hand what it is like to have a loved one in hospital

# Canberra Hospital Foundation's Strategic Plan

## OUR VISION

CREATING EXCEPTIONAL HEALTHCARE TOGETHER.

## OUR ROLE

TO INSPIRE COMMUNITY GIVING THAT CREATES GRATITUDE, CONNECTION, INNOVATION AND HEALING.

### Strategic Goals



#### Relationships

We build life-time relationships with our community



#### Impact

Our giving achieves the impact and vision that we share with our partners



#### Thrive

We are a sustainable and well-run foundation

### Objectives

1

We create opportunities that inspire our community to connect their feelings of gratitude with their ability to give.

2

We deepen our donors understanding of the impact their gift is having every time we connect with them.

3

We create life-long ambassadors by putting the heart in health care through volunteering and in-kind giving.

4

We have a streamlined and effective funding application and acquittal process that focuses on impact.

5

We track and tell the story of the positive impact of our work.

6

We grow meaningful partnerships with government, funders and health service leadership.

6

We have a sustainable and diversified funding base of grants, donations and investments.

7

We govern and deliver our work by meeting and exceeding industry best practice and standards.

### 5 Year KPIs

BY THE 30TH OF JUNE 2026

1

We will have raised \$15m to create exceptional health care together

2

We will have an overall donor retention rate of 46%

3

We will achieve an A+ on our Amplifying Impact dashboard

4

Our partners rate us as a highly effective partner

5

Our sustainable future fund grows from \$120,000 baseline by 20% each year

6

We will achieve an A+ on our organisational excellence dashboard







# 2023 - 2024 THE YEAR THAT WAS

## Your Impact

Thanks to our donors in 2023-2024, CHF supported:



**1,246,000**  
**IN DONATIONS**  
**ALLOCATED TO SUPPORT**  
**PATIENTS**

Provided through funding rounds that ensure money goes to patients where it's most needed



**64+**  
**HEALTHCARE TEAMS**  
Impacted by the generosity of our community.



**42**  
**THERAPEUTIC**  
**PROGRAMS**  
Enhancing patients' health journeys through innovative care.

**22**  
**PIECES OF**  
**ADVANCED**  
**MEDICAL**  
**EQUIPMENT**  
Providing cutting-edge tools for elevated patient care.



**6**  
**REFURBISHED**  
**SPACES**  
Creating more comfortable environments for patients and families.

## Our community flourishes when each individual and family thrives in health

At Canberra Hospital Foundation, our purpose is engrained in a powerful understanding: every moment counts. In health, sometimes a split second can change everything, and the generosity of our community ensures that those critical moments are met with the best possible care, comfort, and compassion from our dedicated healthcare teams.

Each donation, each gesture of support from our community, transforms healthcare into something profoundly human. It means a mother finds reassurance while holding her newborn in a nurturing, thoughtfully refurbished ward. It means a cancer patient can experience a touch of home and kindness through small comforts that remind them they're not alone. It means a rehabilitation patient can make strides thanks to specialised and cutting-edge equipment and tools that can make the difference between dependence and independence.

Our donors and supporters are champions in the healing journey of countless individuals. This year, we've witnessed incredible impact, from funded therapy programs that ease children's journeys through treatment to crucial research that pushes the boundaries of healthcare forward to equipment and facility upgrades that deliver high-quality care. Every dollar raised has contributed to transforming spaces, empowering healthcare workers, or providing patients with a lifeline during vital periods.

The generosity of our community empowers our healthcare teams to be prepared in those split-second moments when lives depend on immediate, innovative care. Our supporters enable us to bring life-saving equipment, comforting programs, and vital research to the bedside, showing patients and families that the entire community stands behind them.

**With heartfelt appreciation for the compassion and commitment of our donors, this past year is a testament to what's possible when we come together. Every contribution fuels our shared mission of a healthier future, ensuring CHF supports, uplifts, and transforms the lives of patients, their loved ones across Canberra and Regional Southern NSW, and healthcare workers alike.**



# Programs

## Key Programs

Through the generosity of our donors, Canberra Hospital Foundation supports four core impactful therapeutic programs, providing comfort and care to patients, families, and staff.

*"People want to be cared for; they want to feel safe, that requires simple things like the nurses' presence and ambience, and for families, the simplicity of a warm blanket." - Tess Knight, Intensive Care Unit Registered Nurse*

### COMFORT ITEMS & QUILTS

The Aboriginal and Torres Strait Islander Consumer Reference Group collaborated with the Palliative Care team to create the Dreaming Quilt program, offering culturally meaningful quilts to Aboriginal and Torres Strait Islander people at the end of life or who have passed away. Families and loved ones can keep the quilts, which can help them in the grieving process. These quilts serve as vital cultural symbols, providing comfort and support when it is most needed.

### THERAPEUTIC HARP PROGRAM

Led by Alison Ware and supported by CHF for over 12 years, the Therapeutic Harp Program offers soothing music that aids in pain management, alleviates anxiety, and supports emotional release. This program touches the lives of patients and their loved ones across several hospital areas, providing a gentle and healing presence.



Patient relaxing to the soothing sounds of Alison Ware's harp music

### ARTS IN HEALTH PROGRAM

The Arts in Health Program transforms specialist healthcare spaces into welcoming, inclusive environments. By integrating visual art, interactive displays, and music, the program helps reduce stress, lift mood, and facilitate supportive social interactions. These thoroughly planned artistic touches are designed to create a comforting atmosphere, promoting healing and a sense of community for patients, families, and staff.



Staff are all smiles and pats with Lachie the Therapy Dog

### THERAPY DOG PROGRAM AND PAWS THE PRESSURE

Therapy dogs play a vital role in supporting the well-being of our healthcare staff. By offering a calming presence, these friendly dogs provide much-needed moments of respite during busy and often stressful days. Spending time with the therapy dogs allows staff to take a therapeutic break, helping them unwind, recharge, and return to their roles with renewed energy. Therapy dogs reduce stress and boost morale, creating a more positive and supportive work environment for those who dedicate themselves to caring for others.

### COMFORT CARE AT END OF LIFE PROGRAM

Since 2019, the Comfort Care at End of Life Program has provided essential support for patients and families during their final moments together. This program, funded by CHF, offers comforting items, such as warm blankets, soft lighting, memory boxes, and cuddle beds, to create a serene, homelike environment. Families can preserve keepsakes and connect remotely through iPads, all while receiving compassionate care that respects the emotional and spiritual needs of those saying goodbye. This program ensures dignity, warmth, and support when families face difficult periods.

## Quality Dementia Care Program

*"Two in three people with dementia are thought to be living in the community. The Quality Dementia Care Program advocates for positive change, enabling people with dementia to live as well as possible." - Angela Hamalainen, Registered Nurse*

Canberra Hospital's Quality Dementia Care Program embodies a deep commitment to supporting older adults to live safely and independently at home for as long as possible. Made possible by the generous support of our community during CAN GIVE DAY 2023, this program provides critical tools for a more compassionate approach to dementia care, equipping carers and healthcare professionals with resources that promote dignity, comfort, and engagement for people living with dementia.



Registered Nurse Angela Hamalainen with some funded items used in the program

Through the Rapid Assessment of the Deteriorating Aged at Risk (RADAR) service, the Quality Dementia Care Program brings a specialised, person-centred approach to dementia care. The RADAR team works directly with older adults in their homes, conducting comprehensive geriatric assessments that focus on enabling them to maintain their independence and avoid hospitalisations.

Adding Quality Dementia Care products, like fidget mats, fiddle boards, and activity cushions, offers people with dementia comforting, sensory-rich experiences that promote relaxation and engagement, helping alleviate anxiety, restlessness, and responsive behaviours. These tools are transformative for both patients and carers, creating moments of connection, reducing stress, and supporting memory function through non-pharmacological strategies.

As Registered Nurse Angela Hamalainen describes, "These products enhance not only our patients' wellbeing but also provide invaluable support to their carers, helping them find peace and joy in small, meaningful interactions."

The program has redefined support for individuals with dementia, offering carers education, mindfulness tools, and emotional resilience. Thanks to the unwavering support of our community, the Quality Dementia Care Program is poised to impact the lives of many, offering a path to a more fulfilling, dignified care experience for people with dementia, their families and carers.

*"Thank you to the Canberra community for valuing the role we play in keeping older people safe at home. Your donations make possible this progressive and holistic approach to dementia care, and we are eager to share these resources with our patients." - Angela Hamalainen, Registered Nurse*

In 2023-24 CHF has continued to fund the SPICE Program which also supports families living with dementia. The SPICE program understands the unique challenges faced by both individuals with dementia and their carers. It offers tailored physical activity adapted to their abilities, cognitive stimulation therapy through engaging discussions and activities, and comprehensive nutritional assessments to boost overall wellbeing.



## Cancer Australia Grant Initiative

### SUPPORTING CANCER CARE PATHWAYS FOR ABORIGINAL AND TORRES STRAIT ISLANDER COMMUNITIES

Alongside Cancer Australia and Canberra Health Services, the Canberra Hospital Foundation continued its funding contribution in 2023-2024 to address cancer-related challenges for Aboriginal and Torres Strait Islander communities in the ACT and surrounding regions. This initiative, *Pathways to Wellbeing for Aboriginal and Torres Strait Islander People with Cancer*, focuses on creating culturally safe and responsive cancer care pathways that address unique healthcare needs, improve early detection, and provide ongoing support.

1

#### KEY ACHIEVEMENTS OF THE INITIATIVE IN 2023-2024

##### Community Engagement and Partnerships

Strong partnerships were established with ACT and regional Aboriginal Medical Services and community organisations, enhancing cross-regional support networks essential for culturally informed cancer care.

2

##### Workshops for Cancer Prevention and Early Detection

Four workshops were conducted on cancer prevention, screening, and risk factor awareness, receiving overwhelmingly positive feedback. These sessions are designed to empower participants with practical knowledge and encourage lifestyle changes. Notably, 96% of attendees reported a commitment to lifestyle adjustments, with 61% intending to quit smoking.

3

##### Staff Yarning Circles

Two Staff Yarning Circles were conducted to foster cultural awareness among healthcare providers, improving staff's confidence and communication with Aboriginal and Torres Strait Islander patients. Further sessions are planned to deepen this engagement.

4

##### Yarning about Cancer Support Sessions

Two initial support sessions were held to encourage group discussions about cancer experiences, laying the foundation for a sustained Cancer Support Group at the Canberra Region Cancer Centre (CRCC).

5

##### Aboriginal Liaison Service Integration

Aboriginal Liaison Officers (ALO) now provide tailored support to cancer patients early in their treatment journey at CRCC, creating consistent access to culturally respectful care aligned with Cancer Australia's Optimal Care Pathway.

6

##### Development of a Culturally Appropriate Cancer Care Brochure

In collaboration with community representatives, a brochure is being developed to assist patients and families in preparing for cancer treatment. This resource aims to improve understanding and reduce anxiety, especially for those travelling from surrounding regions for care at CRCC.

7

##### Dreaming Quilts Program

Fourteen Dreaming Quilts were crafted and distributed, offering a meaningful cultural connection and comfort to Aboriginal and Torres Strait Islander patients. This program will continue under the Canberra Health Services ALO.

8

##### Increasing Participation in Cancer Screening

Through culturally tailored workshops on breast, prostate, and lung cancers, 54 community members engaged with screening programs. Participant feedback indicated a marked increase in understanding of cancer risk factors and screening importance.

CHF acknowledges the importance of community-driven approaches to culturally appropriate cancer care. By playing our part in supporting this important initiative led by experts, we aim to help provide enduring, culturally respectful support for people experiencing cancer in Aboriginal and Torres Strait Islander communities.

## Refurbishments

### The Cancer Wellbeing Space and Research Hub

The Canberra Region Cancer Centre continues to look forward to the progression of the two impactful spaces that continue to shape the care and support offered to cancer patients and their families, the Cancer Wellbeing Space and the Cancer Research Hub. Thanks to ongoing support from our donors, these integrated facilities are advancing the ability to provide holistic care to patients and to conduct cutting-edge research.

The Cancer Wellbeing Space is moving closer to completion, soon opening its doors to create a sanctuary for patients undergoing treatment and those within five years post-treatment, along with their families and carers.

Located on Level 3, Building 19, the space has been designed to be a welcoming, supportive environment that caters to both physical and emotional wellbeing. Programs in the Cancer Wellbeing Space will include fitness sessions, nutrition counselling, mental health support, and relaxation activities, allowing patients to access comprehensive care alongside their medical treatment.

The space will also offer areas for connection and reflection, where patients can meet others facing similar journeys, engage in group activities, and connect with local services for continued support beyond the hospital. With drop-off and parking options nearby, access to the Cancer Wellbeing Space has been prioritised to ensure convenience for families and patients alike.



CHF Board Members on tour in the soon to be open, Cancer Wellbeing Space

Adjacent to the Cancer Wellbeing Space, the Cancer Research Hub is developing as a cornerstone of research and innovation in cancer care. The co-location of these two facilities enables a flow between patient care and research, directly benefiting the community with insights from clinical trials, research presentations, and studies focused on enhancing patient outcomes. This proximity allows clinicians and researchers to collaborate closely, fostering a deeper understanding of cancer care needs and advancements in treatment.

Through the generosity of community donations, CHF has the ability to support these spaces, making a lasting impact on the lives of patients and families affected by cancer. With the space soon welcoming patients and families, we look forward to the profound impact your contributions will have on our community.

*"It takes time to do the research. But the more research we do, the more impact we will have on individuals now and into the future." - Alison Davis*



Professor Alison Davis is leading Paragon II - research focussed on Women's Rare Cancer



## Refurbishment of Medical Imaging Waiting Areas

Refurbishments in healthcare spaces are essential for creating environments that reduce patient stress, simplify navigation, and improve experiences for patients and families. Canberra Hospital's Medical Imaging Department recently transformed its waiting areas, thanks to CAN GIVE DAY 2023 donations. These upgrades help patients feel more at ease from arrival, especially those who may be anxious or unfamiliar with medical settings.

The refurbishment includes colour-coded seating and murals as wayfinding aids, making the area both bright and intuitive. This initiative meets practical needs while fostering a calming, organised environment, easing stress for patients, families, and caregivers.

The new family lounge extends beyond a typical waiting room, designed to feel like a comforting living room. With thoughtfully selected furniture, it offers a serene space for women and their support people as they process difficult information.

Additionally, the quiet room now provides a beautifully designed, private sanctuary for reflection, grieving, and processing clinical news, recognising the importance of sensitivity during challenging times. Thanks to the Canberra community's generous support, this refurbishment has transformed Medical Imaging into a more accessible, comforting, and uplifting environment for all who visit.



Medical Imaging Team Leader Jenny Wagener says the refurbishments help to ease the patient journey

## Equipment

### Robotics Rehabilitation Program at the University of Canberra Hospital

The Robotics Rehabilitation Program at the University of Canberra Hospital is transforming lives, offering renewed hope and independence to patients facing complex recovery journeys. Now one of only two public facilities in Australia to provide advanced robotics for upper and lower limb rehabilitation, the program reflects a powerful commitment to having access to cutting-edge equipment locally in Canberra.

A joint venture between Canberra Hospital Foundation (CHF), Canberra Health Services and the University of Canberra, the upper limb equipment was funded by CHF's valued donors and partners, including GIO and a Family Trust.



Dan Wilkinson and Kathleen Nicholls from GIO being stepped through the cutting-edge robotics at University of Canberra Hospital

For many patients, the journey back to independence after a stroke, accident, or neurological condition can feel overwhelming. Traditional therapies, though effective, often struggle to provide the precise, motivating support needed for optimal recovery. The Robotics Rehabilitation Program changes that. Patients can track each small gain and renewed movement using advanced devices like the Armeo Spring and Lokomat, sparking a sense of progress and control in their healing.

Occupational Therapists see the profound difference this technology makes, noting how it "lights a fire" in patients.

*"When they see their limbs moving again, it gives them back a piece of their lives."*  
**Josh Commons, Occupational Therapist**



Rehabilitation patient Robert Wells using Armeo Spring:- upper arm rehabilitation robot

Patients who rely on the upper limb robotics suite have gained a renewed sense of purpose through the interactive, game-like format, which turns rehabilitation into a personal challenge, pushing them to strive for their best with each session.

*"I am very grateful: it's helping me get my life back together."*  
**- Paul Mitchell, Robotics Rehabilitation Program Patient**

The program is not only about technology; it's about creating meaningful change in people's lives. It's about building motivation, independence, and a sense of possibility for those reclaiming their lives one small movement at a time. Each session becomes more than therapy; it's a step toward a brighter future.

At the heart of the program's success is our community's generosity. The support from donors, supporters and partners has made this life-changing program possible.



Rehabilitation patient Paul Mitchell using Armeo Power:- assisted by Occupational Therapist Josh Commons

### Panda Warmer Resus View Devices

*"Your generosity has directly enhanced our emergency department's ability to deliver the best possible care for children. You've made a true difference in the lives of our littlest patients and their families."* - **Dr. Alison Lally, NICU Clinician**



Neonatal Intensive Care healthcare staff training on the Panda Warmer Resus View device

The new Panda Warmer Resus View devices in the Neonatal Intensive Care Unit (NICU) are revolutionising the way healthcare teams care for our youngest and most vulnerable patients. These advanced devices are equipped to meet the unique needs of newborns and infants, enhancing both the quality and efficiency of neonatal care at Canberra Hospital.

The Panda Warmer Resus View devices offer a suite of specialised features, including built-in scales, continuous vital sign monitoring, and the ability to deliver targeted warmth and lighting. These capabilities allow medical staff to quickly and accurately assess infants, providing essential support during critical moments.

The impact of these devices would not have been possible without our community's unwavering support. The new Panda Warmer Resus View devices underscore the powerful impact of community support in elevating paediatric healthcare.





# Comfort Care

## The Value of the Donation Station as a Community Hub

The Donation Station has become an indispensable part of CHF and a key feature of our shopfront office. Positioned strategically in the foyer at Canberra Hospital, it serves not only as a practical centre for CHF activities but also as a welcoming point of connection for our community. Fondly known as “the face of CHF,” the Donation Station has grown into a vibrant meeting place for both new and returning visitors, fostering a deeper sense of community engagement.

The Donation Station continues to evolve and has become a social hub where individuals come together to give, share, and connect. This transformation has positioned the Donation Station as a central gathering spot for gifters—community members who bring their generosity, whether in the form of comfort items or monetary contributions. This space is no longer just a drop-off point but a lively area where stories are exchanged, gratitude is shared, and the spirit of giving is celebrated.

The Donation Station continues to play a critical role in connecting CHF with a network of dedicated volunteer crafters. These incredible individuals devote their time and skills to produce a wide range of handcrafted comfort items, which are then distributed to vulnerable patients across public hospitals, community health centres, and outpatient facilities in Canberra. The range of comfort items includes lap blankets and quilts, cuddly toys and wooden toys, bed socks and fiddle muffs, neonatal wraps for premature babies, scarves for cancer patients, and many more.



Patient Mum, Connie, visiting the Donation Station to collect a little something for her son.

These lovingly made items offer more than just physical warmth; they bring emotional comfort to patients and their families, embodying the generosity and care of our community. Each year, hundreds of patients benefit from these thoughtful gifts, making their hospital experience a little brighter.

As the Donation Station thrives, it has become a symbol of community spirit and resilience. It's a place where the act of giving is met with heartfelt appreciation, where donors and volunteers can see firsthand the impact of their contributions that not only support CHF's mission but also create a sense of belonging among those who visit, transforming the act of donation into a shared experience that strengthens our community.



**120**  
**IN-KIND DONORS AND CRAFTING GROUPS PROVIDED LOVINGLY CRAFTED COMFORT ITEMS**



**OVER 7,000**  
**BEAUTIFUL COMFORT ITEMS WERE DONATED**

Items were distributed across every hospital, including Clare Holland House, community health centres and walk-in clinics.

*“When my husband had a stroke, the nurses found a blanket for him in his favourite footy team colours, to know this was created by a member of our community, a stranger, was one small act that gave us hope”*  
**- Patient's family member**

We are immensely proud of the impact created through the Donation Station, which brings people together in the spirit of giving and making a real difference in the lives of those who need it most.

# Volunteers

## CRCC Patient Transport Program

*“The Patient Transport Program is an amazing support for our patients, and as a volunteer, it is a very positive and rewarding program for us too. We can see and hear the tangible benefits every day we bring a patient to their appointment.” - CHS Volunteer*

Since its launch in September 2020, the CRCC Patient Transport Program has provided important transport assistance for patients from Canberra and Queanbeyan attending appointments at the Canberra Region Cancer Centre. This invaluable program made possible through donations to CHF and the support of CHF's Community Partner, Lennock Motors, ensures that patients without access to transport can receive essential services such as radiation treatment, Medical Oncology, Haematology, Immunology, and Palliative Care without the stress of transportation challenges.

A dedicated Volkswagen vehicle, supplied and maintained by Lennock Motors VW, ensures patients receive consistent, reliable transportation to and from their appointments. Weekly cleaning, refuelling, and routine maintenance keep the vehicle in excellent condition for the program's sole purpose of supporting CRCC patients.

CRCC volunteers, specifically trained for the program, provide patients with compassionate support and safe transport. Each volunteer is equipped with a mobile phone and hands-free car technology, ensuring efficient and seamless communication during shifts.

## IMPACT

**THE PROGRAM HAS SEEN STEADY GROWTH IN PATIENT USAGE**



September-December 2020  
**414 trips**

January-December 2021  
**1,566 trips** (Covid single patient trips)

January-December 2022  
**1,159 trips**

January-December 2023  
**1,251 trips**



Caroline McIntyre and Helen Falla taking delivery of a new Volkswagen for the Patient Transport Program. Special thanks to Peter Munday and Lennock Volkswagen

*“Just knowing it is one less thing I have to worry about each day and is a real support.” - CRCC Patient*

Patients often rely on the service multiple times over weeks or months, particularly those receiving regular treatments such as daily radiation. Previously, many of these patients would endure up to three public buses for a single trip or bear the financial strain of taxis and Ubers, significantly impacting attendance at appointments. The Volunteer Transport Program has the ability to remove these barriers, ensuring patients can focus on their treatment without transportation worries.

We extend our deepest gratitude to Lennock Volkswagen, our dedicated CRCC volunteers, and our donors for making this life-changing program possible. Together, we ensure that no patient faces the added burden of transport challenges on their cancer journey.





# Charity BBQ

Canberra Hospital Foundation’s weekly Charity BBQ continues to be a much-loved tradition at Canberra Hospital, drawing enthusiastic crowds every Thursday. Since its exciting return in May last year, the BBQ has not only sustained its outstanding service but has also expanded its volunteer base and significantly increased its fundraising efforts. It has become a highly anticipated event for healthcare teams, patients, visitors, and families alike. This shared experience brings a moment of joy and comfort to those navigating the challenges of a hospital setting.

At the heart of the BBQ’s success is our BAR-B-CREW, a fantastic team of dedicated individuals and corporate groups who volunteer their time to make it all happen. From cooking and serving to handling cashier duties, setup, and afternoon pack-down, these volunteers are the backbone of the operation. Their unwavering commitment and enthusiasm have helped grow the BBQ’s impact, allowing us to raise significant funds that directly support patient care.

The funds raised through the Charity BBQ are vital for enhancing patient experiences across Canberra Hospital. Every dollar goes towards purchasing essential equipment, funding research, and supporting therapeutic programs that make a tangible difference in patients’ lives. The BBQ has also contributed to transformative projects that enhance the hospital environment, all made possible by the generosity of our volunteers and supporters.

We extend our deepest gratitude to our incredible BAR-B-CREW volunteers. Their dedication and tireless efforts have not only kept this tradition alive but have also strengthened our community’s commitment to supporting one another. Thanks to their ongoing support, the Charity BBQ continues to thrive, embodying the spirit of giving and making a positive impact every week.



A full BBQ-Crew for CAN GIVE DAY 2023



CEO Helen Falla and BBQ volunteer Geraldine

**As we look ahead to another year of sizzling success, we are excited to continue the BBQ; here’s to another fantastic year of the Charity BBQ!**

## Canberra Hospital Foundation Gift Shop

### Continuing the Legacy of the Canberra Hospital Foundation Gift Shop

In February 2023, after 50 remarkable years of service, the Canberra Hospital Auxiliary Committee concluded its operations, leaving a profound legacy that touched the lives of patients, staff, and visitors across Canberra Health Services and the wider community. With immense gratitude for the Auxiliary’s decades of dedication, the Canberra Hospital Foundation proudly took over the operations of the shop, now rebranded as the Canberra Hospital Foundation Gift Shop. This transition has allowed us to build upon the Auxiliary’s exceptional service, further supporting the provision of outstanding healthcare.

CHF’s Gift Shop has continued to thrive. The shop relocated to a temporary space to allow an eagerly anticipated refurbishment of the shop to occur. Although the temporary space is smaller than what everyone is used to, it remains a welcoming haven for patients, families, and staff, offering a diverse selection of gifts, essentials, and comforting items. Every purchase made at the Gift Shop directly supports patient care initiatives, making a meaningful difference in the lives of those within our hospital community.

A fun tradition that remains unchanged is the sale of our beloved red frogs, an all-time favourite among patients, visitors, and healthcare workers.

**Each month, the shop sells an impressive 20,000 red frogs, a sweet reminder of the small moments of joy and connection that make the shop such a special place.**

The Gift Shop’s success lies in the dedication of our volunteers, many of whom have continued their service after the transition from the Auxiliary Committee. Their passion and commitment have helped us maintain the shop’s welcoming atmosphere and ensure its smooth operation.

We are incredibly grateful for the unwavering support of our volunteers, customers, and the broader community. Together, we’ve upheld the values of compassion, dedication, and service that were the foundations of the Auxiliary Committee. As we look ahead, the CHF Gift Shop will continue to honour this legacy, providing essential support for healthcare excellence while creating a positive impact for everyone who walks through its doors.



CHF Gift Shop volunteer Tess

## Canberra Hospital Foundation Choir

*“The patients and staff seem to genuinely appreciate our singing. Many stop to listen, smile, and even sit down to enjoy the music. It’s wonderful to see the joy and relaxation our music brings to everyone around us.” - Anne Folger-Pleuger, Choir Volunteer and CHS Staff Member*



Choir Managers, Lachlan and Callum

The Canberra Hospital Foundation Choir, supported by generous donors, and volunteers brings the soothing power of music to patients, staff, and visitors. More than a musical group, it creates moments of comfort, joy, and healing in a stressful environment.

For healthcare staff, the choir offers a welcome pause and calm amidst their demanding schedules. During Christmas carolling, the choir uplifted spirits across wards, filling the hospital with festive warmth.

Choir members find the experience transformative, enjoying community through weekly rehearsals. With plans to perform at community events and in the new Critical Services Building, the choir spreads joy beyond the hospital.

Volunteering in the choir is about more than singing—it’s about connecting and making a meaningful difference. The choir transforms the hospital, turning ordinary spaces into places of warmth and hope.

**As we reflect on another year of uplifting performances, we look forward to expanding the choir’s reach in 2025, expanding to other hospitals and exploring new ways to integrate the therapeutic benefits of music into patient care. We extend our heartfelt thanks to the choir members, supporters, and the entire community for helping us to harmonise health and happiness.**







## Events AND COMMUNITY

## Supporting Impact through Community Engagement

Canberrans love coming together for shared experiences, and we've embraced this enthusiasm with community events instrumental in advancing CHF's mission to support patients, healthcare teams, and the broader community. Our events aren't just about raising funds, they build connections, creating moments of joy, and uniting people with a shared purpose. Throughout the year, we've leaned into the power of events to bring our community closer, supporting patients, healthcare teams, and families when it matters most.

Our fundraising and community engagement events have become dynamic gatherings where individuals, families, and organisations unite to make a real impact. Whether it's a charity golf day, a heartfelt awareness campaign, or a family-friendly fundraiser, these events create a strong network of support around our healthcare teams, offering a chance to connect, inspire, and share stories that bring our community

closer together. Each event is an opportunity to celebrate the spirit of giving and highlight the positive change we can achieve collectively.

We've witnessed the incredible difference that active community participation makes in transforming healthcare challenges into opportunities for incredible patient care. Through every event, the community engages deeply with our mission and contributes to a healthier, more vibrant city. These gatherings strengthen partnerships, raise critical awareness of healthcare needs, and create a lasting legacy of care and compassion.

Each event is more than just a fundraiser; it's a reflection of the power of community spirit and compassion. A big thank you to all our event attendees and supporters; you are the backbone to ensuring they are successful. As we look ahead, we remain dedicated to expanding our reach, building even stronger connections, and ensuring that every event contributes to the transformative work of CHF.

### Golden Gala CELEBRATING 50 YEARS OF CANBERRA HOSPITAL

On Friday, 4 August 2023, CHF hosted its inaugural Golden Gala Dinner at the stunning QT Canberra Ballroom, marking 50 years since the opening of The Canberra Hospital, originally known as Woden Valley Hospital. The evening was a dazzling celebration of the hospital's golden anniversary, paying tribute to its incredible journey and the dedicated healthcare workers who have made it a cornerstone of our community.

The star-studded night was headlined by 70's music icon and CHF Ambassador, Mr Leo Sayer, who delivered a memorable performance alongside Canberra's own Spectrum Big Band. Guests were treated to a spectacular night of entertainment, featuring canapés, a two-course dinner, beverages, and both silent and live auctions. The QT Canberra Ballroom buzzed with excitement as attendees bid on an array of generous prizes, including a stunning VW T-Cross Car in Reef Metallic Blue, donated by our Principal Sponsor, Lennock Volkswagen.

Funds raised on the night will directly support the Cancer Wellbeing Space and help acquire essential research equipment for the new Cancer Research Hub. We are thrilled to share that we raised an incredible \$148,356, all thanks to the generosity and enthusiasm of our guests, donors, and community.

The event would not have been possible without the support of our esteemed partners. We extend our heartfelt gratitude to:

**Lennock Volkswagen** - Principal Sponsor

**GIO** - Community Supporter

**Region Media** - Community Partner

A special thank you also goes out to the many local businesses and donors who donated items for our auctions. Your support played a vital role in making the night a success.

As we reflect on the Golden Gala, we are filled with gratitude and pride. The laughter, the shared stories, the celebratory cheers, these moments have become a part of Canberra's history. Together, we honoured the hospital's legacy while taking significant steps towards a brighter future for healthcare in our community.

**To everyone who attended, bid, donated, or supported us in any way, thank you. You have made this event a resounding success, and together, we are building a legacy of care and compassion for the next 50 years and beyond.**



# CAN GIVE DAY 2023

## A CELEBRATION OF COMMUNITY, CARE, AND COMPASSION

In its fourth year, CAN GIVE DAY 2023 continued to be a vibrant showcase of the Canberra community's commitment to exceptional patient care and support for healthcare teams. Held on Friday, 13 October, the annual event brought together fundraisers, local leaders, healthcare staff, and generous donors in a shared effort to enhance healthcare services across the ACT.

This year's CAN GIVE DAY raised an impressive total of \$334,913, thanks to the incredible generosity of our donors, partners, and the wider Canberra community.

### A Day of Connection and Celebration

CAN GIVE DAY 2023 featured on-the-day coverage from our valued media partner, Canberra FM radio station, with a media tent and BBQ set up at Canberra Hospital. The event expanded its reach this year, engaging staff not only at Canberra Hospital but also at University of Canberra Hospital and, for the first time, North Canberra Hospital. A total of 17 Canberra Health Services teams participated through creative activities such as a talent contest, Hawaiian shirt day, and a hair-shaving challenge. These funds were doubled thanks to our matched funding donors, amplifying the impact of dollars raised.

The response from healthcare teams was overwhelmingly positive, with many sharing that the day created a sense of community and team spirit, making them feel appreciated and valued. Throughout the day, interviews with CHF CEO Helen Falla, Board Chair Debbie Rolfe AM, and several participants highlighted the excitement and energy of the event.



You can never have too many Super Heroes on CAN GIVE DAY



MLA's Emma Davidson MLA and Rebecca Vassarotti buddied up for their Big Wig challenge

### The Big Wig Challenge: Leaders Taking the Leap

Returning for its second year, the Big Wig Challenge was once again a standout event, serving as the grand finale on Friday, 27 October. This thrilling fundraiser featured prominent local leaders and community figures abseiling 18 metres down Building 8 at Canberra Hospital, each aiming to raise a minimum of \$10,000 to participate. The 2023 lineup included:

Elvis  
Nick Johnson  
Ally Jordon  
Adam Gill  
Nick Symons  
Emma Davidson MLA  
Rebecca Vassarotti MLA  
Peter Munday OAM  
Fabian Muscat  
Senator David Pocock  
Richard Rolfe AM



Together, the Big Wigs raised an outstanding \$63,947. Special recognition goes to Fabian Muscat, the top fundraiser, with a remarkable \$26,604, followed by Peter Munday, who raised \$20,274. The event was covered by WIN News Canberra and RiotACT, with strong social media engagement, including posts from participating politicians and community leaders. We are grateful to RigCom for ensuring the safety and success of this high-adrenaline challenge.



Master Cook Challengers, Cathie, Sanjay, Tashi and Michael

### Master Cook Challenge: A Culinary Showdown

The Master Cook Challenge returned in 2023, held at Canberra College Cares on Thursday, 26 October. Four talented cooks faced off in a series of culinary challenges, showcasing their skills through signature dishes, a taste test, and a mystery box reveal. This year's competitors were:

Cathie O'Neill -  
returning contestant

Michael Samuel -  
Canberra Health  
Services

Chef Sanjay Kumar -  
Daana

Chef Tashi - Lamshed's,  
returning contestant



The judging panel, featuring Peter Munday OAM, Brendan Docherty, and Luffy Koh, had the tough task of selecting a winner. Chef Tashi secured the Master Cook title for the second year in a row, while Cathie O'Neill once again took home the People's Choice Award, raising an impressive \$10,283. Coles generously provided vouchers for the ingredients, and Canberra College Cares offered incredible support, hosting the event at a discounted rate. The night was a memorable success, filled with delicious food, trivia, raffles, and lively bidding on the cooks' creations.



Deborah Rolfe, Olivia McIntyre, Hearty, Jazmeen Payne, Louiza Blomfield and Helen Falla are feeling CAN GIVE DAY vibes

### Community Partners and Impact

The success of CAN GIVE DAY 2023 was made possible by our generous community partners, including GIO and Lennock Volkswagen. Capital Chemist, Tall Foundation, the Rolfe Family, and the Liangis Family who provided matched funding throughout the event. Our media partners, Canberra FM radio station and Region Media, played a vital role in amplifying the message and encouraging community participation.

CAN GIVE DAY 2023 amplified Canberra community's spirit of giving. From the creative fundraising activities of healthcare staff to the daring feats of the Big Wig Challenge and the culinary delights of the Master Cook Challenge, every effort contributed to making a significant impact. The funds raised will go towards supporting grant applications for essential equipment, important research, therapeutic programs, and refurbishments, all aimed at enhancing the patient experience across our public healthcare services.



The Women Youth and Children bake sale is a regular on CAN GIVE DAY

To everyone who donated, participated, or supported CAN GIVE DAY in any way, we extend our deepest gratitude. Your kindness and generosity have brought comfort, hope, and life-changing support to patients and their families. Together, we've once again shown the power of a united community, making a difference one donation, one event, and one shared vision at a time.





## ClubsACT Compete for OUR HEART

### RALLYING THE CANBERRA CLUB COMMUNITY FOR HEALTHCARE IMPACT

The Compete for OUR HEART Challenge is an inaugural partnership between CHF and ClubsACT throughout 2023-2024. It brings together local clubs in a spirited competition to raise funds to support patients, their loved ones and healthcare teams. This year-long campaign has already seen remarkable community engagement, with clubs across Canberra uniting in their commitment to supporting patients, families, and healthcare teams.

The challenge has brought together an impressive roster of participating clubs, including:

**Ainslie Football Club** - Ainslie Group  
**Canberra Southern Cross Club Jamison**  
**Canberra Southern Cross Club Tuggeranong**  
**Canberra Southern Cross Club Woden**  
**Gungahlin Lakes Club** - Ainslie Group  
**Harmonie German Club**  
**Murrumbidgee Golf Club**  
**Eastlake Football Club** - The Eastlake Group  
**Eastlake Gungahlin** - The Eastlake Group  
**Eastlake Calwell** - The Eastlake Group  
**Vikings Erindale**  
**Vikings Chisholm**  
**Vikings Lanyon**  
**Vikings Town Centre**

A highlight of the campaign has been the Best Burger Competition, where participating clubs are crafting unique burger dishes, donating a portion of each sale to the cause. This delicious and community-driven initiative has boosted fundraising totals and also engaged patrons in a fun and memorable way, creating a deeper connection to the cause.

To celebrate the unique strengths of each Club, big or small, we divided the competition into small and large Clubs to ensure every Club gets a chance to shine and make a meaningful impact on the race for OUR HEART. Each Club is putting their heart into creative fundraising efforts, from hosting events to contributing a portion of sales, with a friendly rivalry driving them to exceed their goals. The challenge encourages clubs to raise at least \$10,000 each, with the highest fundraiser set to receive the prestigious Canberra Hospital Foundation Top Fundraiser award and the Club with the top burger to win the Best Burger Award at the annual ClubsACT Awards Night in October 2024.



*Clubs ACT Operations Manager Kate Palmer and CHF Board Chair Susan Proctor at the 2023 Clubs ACT Awards Night*

Funds raised through the Compete for OUR HEART Challenge will be directed toward vital healthcare projects, including the purchase of specialised equipment, funding important research, providing therapeutic programs, and enhancing hospital spaces for patients and their families. The impact of this collective effort is felt throughout the Canberra Region, with each dollar raised contributing to improved care and comfort for those facing health challenges.

**The Compete for OUR HEART Challenge is a testament to the power of community collaboration. It showcases the incredible generosity of Canberra's local clubs, their members, and patrons who are coming together to make a difference. As the challenge wraps up soon in October 2024, we look forward to celebrating the outstanding contributions of each Club and recognising the collective impact of this campaign on our community.**



*Hearty and his young friends help launch Vikings Tuggeranongs bid to Compete for OUR HEART*

## Give Me 5

### SUPPORTING CANBERRA'S YOUNGEST PATIENTS THROUGH COMMUNITY GENEROSITY

In 2024, Canberra Hospital Foundation once again partnered with MIX 106.3 for the annual Give Me 5 campaign for the month of June.

Since 2012, the campaign has raised over \$1 million for sick children, demonstrating the incredible impact of what may seem like small donations and the collective power of community support. This year's campaign saw an outstanding \$40,175 raised, a significant increase from the previous year, reflecting the deep connection and generosity of the Canberra community.

Throughout the month, Give Me 5 focused on raising funds for distraction tools and therapeutic items that help reduce pain and anxiety for children undergoing treatment. These innovative devices have been game-changers for paediatric care, bringing comfort and joy to young patients when they need it most. The campaign highlighted the theme of "distraction," emphasising how engaging tools and activities can make a real difference in a child's hospital experience, especially for those with sensory sensitivities.

This year's Give Me 5 campaign also featured a week-long Radiothon hosted by MIX 106.3 at Westfield Belconnen, where the community came together to donate and participate in fun activities. The campaign received incredible support from local businesses, including Bounce and iPlay, who helped make the week a memorable success. The enthusiasm and involvement from the Canberra community, from dropping in spare change to sharing stories of impact, was truly heartwarming.



*A special group of taste testers vote for fundraising menu items at Vikings Tuggeranong*



*Hearty loves high fiving!*



*Lachie the therapy dog enjoys pats at Mix 106.3 Give Me 5 Outside Broadcast at Westfield Belconnen*

A special thank you goes out to Canberra FM and the MIX 106.3 team for their unwavering commitment and tireless efforts in amplifying the message of Give Me 5. Your support not only helps raise vital funds but also raises awareness about the needs of our youngest and most vulnerable patients.

**On behalf of CHF, the healthcare teams, and the families we serve, we extend our deepest gratitude to everyone who contributed. Your kindness goes beyond financial support, it brings comfort, relief, and a sense of hope to children facing difficult medical journeys.**



**CANBERRA  
HOSPITAL  
FOUNDATION**





Canberra Mens Choir spread resounding joy at University of Canberra Hospital

## Givemas

This year's Givemas was a heartwarming success, showcasing the generosity and spirit of the Canberra community. Over the month of December, CHF brought together individuals, schools, local businesses, and community groups to make the festive season brighter for patients, families, and healthcare staff across the Canberra Health Services (CHS) campuses. With our first year extending Givemas activities to North Canberra Hospital (NCH), the reach and impact of this beloved program were felt more widely than ever before.

The highlight of Givemas 2023 was the incredible 8,000 gifts donated by community members, local businesses, and generous donors. From handmade origami crafted by schoolchildren to thoughtfully chosen gifts from businesses, every item was selected with care and compassion. This remarkable effort ensured that no patient spending Christmas in the hospital missed out on the festive spirit, providing comfort and connection during what can be a challenging time.

Music was a major highlight of Givemas 2023, with 42 performances from 19 diverse and talented choirs and musicians across CHS campuses, including Canberra Hospital, University of Canberra Hospital, North Canberra Hospital, the Centenary Hospital for Women, Youth and Children, and the Canberra Region Cancer Centre. The joy of live music brought a sense of calm and festive cheer, with heartwarming moments like a former dance band pianist playing for fellow patients and a guitarist's serenade that brought tears of gratitude.

**To everyone who donated gifts, adopted a ward, performed music, or simply shared a kind word, thank you for making Givemas 2023 an unforgettable month of joy, generosity, and community spirit. Your kindness reached across wards, clinics, and hospitals, creating a ripple effect of positivity and hope. The gratitude expressed by staff, patients, and families has been immense, and we are honoured to be the conduit of this incredible generosity.**

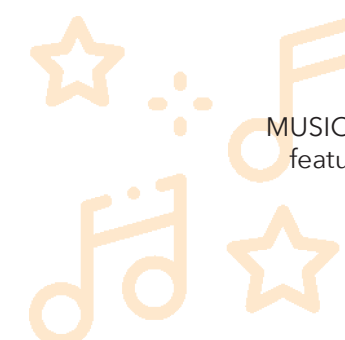
## Givemas by the Numbers



**8,000**  
**GIFTS DONATED**

by individuals, schools,  
community groups, and  
local businesses

**26**  
**WARDS ADOPTED**  
across Canberra  
Health Services  
campuses



**42**  
**MUSIC PERFORMANCES**  
featuring 19 choirs and  
musical acts

**3**  
**VIP VISITS**  
from the Brumbies,  
U.S. Marines, and  
Capital Football



**20**  
**COMMUNITY  
SUPPORTERS  
AND  
BUSINESSES**  
contributing gifts  
and donations

**1,500**  
**PATIENTS  
SUPPORTED**

across all CHS  
campuses, from  
wards to outpatient  
clinics



Helen Falla meets Joslyn from the Department of Industry. Generous donors to Givemas



The US Marines always put smiles on the faces of patients during Givemas



Canberra United players visit with eager patients during Givemas



**CANBERRA  
HOSPITAL  
FOUNDATION**





## Hospitals United for Sick Kids (previously Curing Homesickness)

*"We're so grateful to have access to this innovative equipment, to give patients the opportunity to escape and feel excited, even for just a few minutes, is so important, and can do wonders to support their treatment and healing process." - Registered Nurse*

Canberra Hospital Foundation (CHF) is proud to be an Alliance Partner with Hospitals United for Sick Kids (HUSK), a national initiative dedicated to enhancing paediatric, newborn, and adolescent care in hospitals across Australia. Since its launch in 2019, this collaboration has united children's hospitals, local communities, and corporate partners like Coles, Lowes, and Swisse to support the health and wellbeing of our youngest and most vulnerable patients.

Funds raised through HUSK are directly allocated to supporting CHF's paediatric services, helping us provide vital medical equipment, fund innovative research, and deliver therapeutic programs that make a tangible difference for children in our care. In Canberra, this means that every dollar raised contributes to improving the experiences and outcomes of children receiving treatment at our facilities, including the Centenary Hospital for Women, Youth and Children.

A standout feature of the HUSK partnership is Coles' collaboration on the Mum's Sause product line. For every jar of Mum's Sause sold, 50 cents is donated to support the HUSK Alliance

partners, including CHF. This simple, family-friendly product has become a powerful tool for fundraising, offering customers an easy way to contribute to the care of sick children in their local hospitals. In March 2023, Coles stores across Australia raised over \$1 million for HUSK Alliance partners, showcasing the generosity of shoppers even amid cost-of-living pressures.

The Coles \$2 Card Campaign is another impactful element of the HUSK partnership, inviting customers to purchase a \$2 donation card at Coles stores nationwide. Funds raised through this campaign directly support the local children's hospital foundation in each state or territory. In Canberra, this means that every card purchased at a local Coles store helps CHF provide the best possible care for children in our community, funding essential needs such as new medical equipment and the latest innovations in paediatric care.

To celebrate and promote the 2024 HUSK Card Campaign, CHF hosted a special launch event in the CHF Playground, a Spaghetti Race featuring Coles Managers from top-selling stores and

young patients as judges. This light-hearted and interactive event highlighted the partnership with Coles and showcased the Mum's Sause and Coles fundraising product range, providing a unique opportunity for social media coverage and community engagement. The event connected our supporters, Coles staff, and young patients in a joyful and memorable experience, highlighting the fun side of giving back.

Our ongoing collaboration with HUSK and Coles is driven by a shared commitment to making a meaningful impact on the health and wellbeing

of children in hospitals across Australia. As we continue to strengthen this partnership, we look forward to expanding our reach and increasing the support available for paediatric patients in Canberra.

**We extend our heartfelt thanks to Coles, Lowes, Swisse, and the incredible Canberra community for rallying behind this initiative. Together, we are not only raising funds but also building a brighter, healthier future for our children, one jar of sauce, one \$2 card, and one heartfelt donation at a time.**

## Third-Party Fundraisers

At Canberra Hospital Foundation, we witness time and again the incredible healing power of giving back. Our third-party fundraisers are the heart and soul of this journey, turning their personal experiences into a force for good. These dedicated individuals, families, and community groups find a sense of purpose and healing in supporting others, transforming their own grief, gratitude, or passion into tangible acts of kindness that benefit patients and healthcare teams across Canberra.

### LOVE FROM PENNY AND LYLA

"After losing two babies through miscarriage and neonatal death over the past couple of years, I realised I had a deep desire to try to help others after the loss of their baby" - Alex McDonald, Founder of Love From Penny and Lyla

Alex McDonald is one such remarkable individual who exemplifies the healing power of giving back. After the heartbreaking loss

of her daughters, Penny and Lyla, Alex felt an overwhelming desire to honour their memory and bring comfort to other families facing similar pain. Through Love From Penny & Lyla, Alex created a project that provides care boxes filled with thoughtfully chosen items for families grieving the loss of a baby.

Alex's care boxes, known as Luca Boxes, are filled with items like memory books, candles, handmade keepsakes, and comforting toys, gifts chosen with love to offer solace during an unimaginable time. Each box serves as a reminder that no family has to grieve alone and that a compassionate community is standing behind them.

Third-party fundraisers like Alex embody the spirit of healing through giving. Whether motivated by a personal connection to the hospital, a desire to make a difference, or a need to channel grief into action, each of these fundraisers brings a unique energy and commitment that enriches the work we do.

The act of giving back has a profound ripple effect, supporting those in need but also providing a sense of purpose and healing for the fundraisers themselves. By turning their personal experience into a powerful source of support for others, third-party fundraisers help create a circle of care that extends far beyond hospital walls.

**To everyone who has given their time, energy, and heart as a third-party fundraiser, we offer our deepest gratitude. You are the bridge between your personal story and the wider community, turning your experiences into a legacy of love, kindness, and healing.**



Alex delivering the very first batch of Loss Boxes to ACT Perinatal Loss Coordinator Alison Clarke



## Philanthropy AND RESEARCH

## Philanthropy and Research

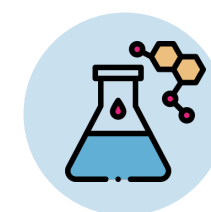
### A POWERFUL PARTNERSHIP FOR PROGRESS

Philanthropy plays a transformative role in advancing healthcare, driving innovation, and supporting the greater good. The generosity of our donors not only uplifts the entire community but also creates lasting, meaningful impact for patients and their families.

This year, philanthropic gifts have been particularly instrumental in propelling our research efforts forward. These contributions enable groundbreaking studies, the development of new treatments, and the pursuit of cutting-edge technologies

that enhance patient care. Ultimately, transformational giving to medical research transcends the realm of charity; it becomes an investment in humanity's collective well-being, manifesting hope, progress, and the potential for transformative change in the fight against disease and suffering. Together, we are pushing the boundaries of what's possible in healthcare, ensuring that every gift makes a tangible difference in the lives of those we serve. This year, major philanthropic gifts have also supported a diverse range of research projects.

### The Deborah Rolfe AM Perpetual Grant for Research



**\$60,000** from funds raised through events has been dedicated to support translational research that bridges the gap between scientific discovery and clinical application.

In recognition of Deborah Rolfe AM's outstanding leadership and commitment as the longstanding Chair of the Canberra Hospital Foundation, we are proud to announce the establishment of the Deborah Rolfe AM Perpetual Grant for Research. This grant serves as a testament to her vision and dedication, supporting critical translational research that bridges the gap between scientific discovery and clinical application. With a focus on patient-centred projects, the grant will empower researchers to collaborate closely with clinicians and patients, driving forward studies that have the potential to transform healthcare delivery.

Translational research is at the heart of this initiative, focusing on swiftly moving scientific insights from the lab to the bedside. It is through this type of research that we can see the greatest impact on patient care, allowing new therapies and technologies to be integrated into clinical practice sooner, benefitting those who need it most. The Deborah Rolfe AM Perpetual Grant for Research stands as a legacy of commitment to advancing healthcare, ensuring that each gift contributes directly to life-changing discoveries.



Deb Rolfe addressing the guests at CHF Golden Gala



## Monaro Committee for Medical Research

Generously donated **\$60,000** grant funding to fuel innovative advancements in cancer research at Canberra Hospital. A further **\$40,000** was donated toward supporting the new Cancer Wellbeing Space.



*The Cancer Wellbeing Space will include a kitchen that will be fully stocked with a range of healthy meal options*

The Monaro Committee for Medical Research supported two significant and impactful research projects: Breastscreen ACT Client Assisted Compression Clinic and Restoring Mouth Opening in Patients with cancer. Huge gratitude to Monaro Committee for Medical Research for their fundraising efforts and ongoing support for people living with cancer in the region.

### Intensive Care Unit Research Initiative

\$22,000 "Inspire Beyond ICU" - Inspiratory Muscle Training Multi-Centre Audit of Usual Care and Multi-Centre Randomised Controlled Trial.

The Intensive Care Unit's initiative, Inspire Beyond is dedicated to improving intensive care outcomes through patient-focused studies, aiming to enhance the quality of care for critically ill patients.

These generous donations exemplify the power of giving and its ability to drive impactful research that touches the lives of patients and families. We are immensely grateful for the support of our philanthropic community, whose contributions are propelling us toward a future of better treatments, improved patient experiences, and innovative healthcare solutions.

Philanthropy is a catalyst for progress, enabling us to cultivate a robust ecosystem of research in Canberra. With every contribution, we are investing in a culture of inquiry and discovery, where researchers are empowered to tackle complex health challenges. Through collaboration with Canberra Health Services and leading institutions, we are ensuring that the ACT

continues to be a leader in medical research, leading to advancements that resonate locally and have the potential to make a global impact.

As we look ahead, we remain committed to supporting transformative research that improves health outcomes, enhances patient care, and drives innovation. Together, with the generosity of our donors, we are shaping a future where medical breakthroughs are not only possible but realised, providing hope for patients and their families when it's needed the most.

## Philanthropic Leadership

We are profoundly grateful for the unwavering support and generosity of our philanthropic leaders. Your commitment to our mission not only inspires us but also drives meaningful change in countless lives. We are deeply appreciative of your vision, compassion, and dedication, which empower us to reach new heights and create a lasting impact; we are sincerely honoured to have you as part of our journey. Thank you for being the driving force behind our success and for helping us build a healthier Canberra. We are endlessly grateful for the legacy of positive transformation you continue to create.

### With sincere gratitude to:

*The Liangis Family; Rolfe Family; Tall Foundation; Capital Chemist; Kenyon Foundation; and generous Family Trusts and individuals.*



*Deb Rolfe, Melita Flynn, Hearty and Richard Tall*

## Partnerships

### GIO

#### GIO & CHF: A Strategic Partner in Transformative Healthcare

Since 2016, GIO has been a pivotal partner of CHF, contributing to projects that have had a profound impact on patient care and health outcomes across the ACT community. This longstanding partnership is rooted in a shared vision of enhancing rehabilitation services, supporting innovation, and improving the quality of life for patients undergoing complex treatments.

GIO's commitment to the Specialist Centre for Rehabilitation, Recovery, and Research has been a key component of our partnership, supporting state-of-the-art initiatives like the Upper Limb Robotics Suite at the newly launched Robotics Rehabilitation Program at the University of Canberra Hospital. Thanks to the collaborative efforts of GIO, CHF event donors and other generous donors, this program has introduced advanced upper and lower limb robotics technology, offering groundbreaking therapies for patients recovering from neurological and physical impairments.

The Robotics Rehabilitation Program integrates cutting-edge devices like the Armeo Spring and Armeo Power for upper limb therapy, and the Lokomat suite for lower limb rehabilitation. These technologies represent a significant leap forward in patient care, allowing for more precise, consistent, and effective therapy. For patients who have suffered from paralysis following a health crisis, these robotic therapies have been life-changing, providing renewed hope and measurable progress.

Beyond their support of the robotics suite, GIO has also played a crucial role in advancing the mental wellbeing of rehabilitation patients through initiatives like the GIO Road to Recovery campaign. This program addresses the psychological challenges that often accompany physical recovery, offering holistic support to patients as they navigate their journey to wellness.

GIO's commitment extends beyond individual projects to broader community engagement, notably through their involvement in CAN GIVE DAY. Their support has helped amplify the impact of this annual fundraising event, with matched funding contributions that have doubled the generosity of the Canberra community.



*Dan Wilkinson and Kathleen Nicholls get a demonstration of assisted technologies funded by GIO*

*"Canberra Hospital Foundation works hard to make a difference in the community. They are a trusted partner, and we are committed to maintaining this partnership in supporting CHF initiatives that significantly enhance the health and wellbeing of the Canberra community." - Dan Wilkinson, Executive Manager GIO.*

The ongoing partnership between GIO and CHF exemplifies what can be achieved when community-minded organisations come together with a shared purpose. Together, we are not only transforming patient care but also setting a new standard for rehabilitation and recovery services in the ACT.

**We extend our deepest gratitude to GIO for their support and look forward to continuing this impactful partnership in the years to come.**



**2023 - 2024** CANBERRA HOSPITAL  
FOUNDATION LIMITED  
FINANCIAL REPORT FOR THE PERIOD  
ENDED 30 JUNE 2024

ABN 59 634 785 345

CANBERRA HOSPITAL FOUNDATION LIMITED  
ABN 59 634 785 345

**DIRECTORS REPORT**

Your directors submit this report for the financial period from 1 July 2023 to 30 June 2024.

**Directors**

The names of each person who has been a director throughout the period and at the date of this report are:

|                     |                      |            |
|---------------------|----------------------|------------|
| Ms Susan Proctor    | Incoming Chairperson | 01/10/2017 |
| Peter Munday        | Director             | 01/10/2017 |
| Kerri Hartland      | Director             | 01/04/2020 |
| Dion Bisa           | Director             | 01/04/2020 |
| Matthew Whittaker   | Director             | 01/06/2020 |
| Robin Stuart-Harris | Director             | 01/04/2022 |
| Nadia Gabellone     | Director             | 01/08/2023 |
| Cathie O'Neill      | Director             | 01/04/2024 |
| Deborah Rolfe       | Chairperson          | Resigned   |
| Bronwyn Fagan       | Deputy Chair         | Resigned   |
| Dr Tony Lafferty    | Director             | Resigned   |

Directors have been in office since the start of the financial period to the date of this report unless otherwise stated.

**Principal Activities**

The principal activities of the organisation during the financial period were to provide additional support to Canberra Health Services and its patients. The organisation allocated the funds it's receives through donations, fundraisers and grants across the hospital to help finance equipment purchases, refurbishments, research and patient dedicated programs.

**Operating Result**

The deficit from ordinary activities amounted to 293,192 (2023: \$1,767,951).

Signed in accordance with a resolution of the Board of Directors.



Name, position

*Susan Proctor, Chair, Canberra Hospital Foundation*

Name, position

Dated this 26<sup>th</sup> day of November 2024




## DIRECTORS' DECLARATION

In accordance with a resolution of the Directors of Canberra Hospital Foundation Limited, the Directors of the registered entity declare that, in the Directors' opinion:

1. The financial statements and notes, as set out on pages 4 to 18, satisfy the requirements of the *Australian Charities and Not-for-profits Commission Act 2012* and:
  - a. comply with Australian Accounting Standards – Simplified Disclosures applicable to the entity; and
  - b. give a true and fair view of the financial position of the registered entity as at 30 June 2024 and of its performance for the period ended on that date.
2. There are reasonable grounds to believe that the registered entity will be able to pay its debts as and when they become due and payable.

This declaration is signed in accordance with subs 60.15(2) of the *Australian Charities and Not-for-profits Commission Regulation 2013*.

  
Name, position Chair, Canberra Hospital Foundation

Susan Proctor, Chair, Canberra Hospital Foundation  
Name, position

Dated this 26<sup>th</sup> day of November 2024



p (+61 2) 6239 5011  
e [admin@bellchambersbarrett.com.au](mailto:admin@bellchambersbarrett.com.au)  
Level 3, 14 Childers St,  
Canberra ACT 2601  
PO Box 4390, Kingston ACT 2604  
ABN 14 942 509 138  
[bellchambersbarrett.com.au](http://bellchambersbarrett.com.au)

## AUDITOR'S INDEPENDENCE DECLARATION UNDER S60-40 OF THE AUSTRALIAN CHARITIES AND NOT-FOR-PROFITS COMMISSION ACT 2012 TO THE DIRECTORS OF CANBERRA HOSPITAL FOUNDATION LIMITED

As lead auditor of Canberra Hospital Foundation, I declare that, to the best of my knowledge and belief, during the year ended 30 June 2024 there have been no contraventions of:

- i. the auditor independence requirements as set out in the *Australian Charities and Not-For-Profits Commission Act 2012* in relation to the audit; and
- ii. any applicable code of professional conduct in relation to the audit.



BellchambersBarrett



Sart Spinks, CA  
Registered Company Auditor  
BellchambersBarrett

Canberra, ACT  
Dated this 26<sup>th</sup> day of November 2024

STATEMENT OF PROFIT OR LOSS  
FOR THE PERIOD ENDED 30 JUNE 2024

|  | Note | 2024<br>\$       | 2023<br>\$  |
|--|------|------------------|-------------|
| Revenue  | 2    | 3,589,859        | 3,572,911   |
| Gain on acquisition of Canberra Hospital Auxiliary             | 1(o) | -                | 602,473     |
| Allocated funds  |      | (1,993,876)      | (1,060,454) |
| Operating expenses   |      | (742,598)        | (387,428)   |
| Employee expenses  |      | (1,146,577)      | (959,551)   |
| <b>Current period surplus / (deficit) before income tax</b>    |      | <b>(293,192)</b> | 1,767,951   |
| Income tax expense   | 1(i) | -                | -           |
| <b>Net current period surplus / (deficit)</b>                  |      | <b>(293,192)</b> | 1,767,951   |
| Net current period surplus / (deficit) attributable to members |      | <b>(293,192)</b> | 1,767,951   |

The accompanying notes form part of these financial statements.

STATEMENT OF FINANCIAL POSITION  
AS AT 30 JUNE 2024

|                                   | Note | 2024<br>\$       | 2023<br>\$ |
|-----------------------------------|------|------------------|------------|
| <b>ASSETS</b>                     |      |                  |            |
| <b>CURRENT ASSETS</b>             |      |                  |            |
| Cash and cash equivalents         | 4    | 5,497,326        | 4,636,736  |
| Trade and other receivables       | 5    | 104,475          | 591,556    |
| Inventory                         | 6    | 54,647           | 73,830     |
| Financial assets                  | 7    | 2,331,614        | 2,148,592  |
| Prepaid expenses                  |      | 9,838            | 49,434     |
| <b>TOTAL CURRENT ASSETS</b>       |      | <b>7,997,900</b> | 7,500,148  |
| <b>NON-CURRENT ASSETS</b>         |      |                  |            |
| Plant & equipment                 |      | 22,259           | 33,643     |
| <b>TOTAL NON-CURRENT ASSETS</b>   |      | <b>22,259</b>    | 33,643     |
| <b>TOTAL ASSETS</b>               |      | <b>8,020,159</b> | 7,533,791  |
| <b>LIABILITIES</b>                |      |                  |            |
| <b>CURRENT LIABILITIES</b>        |      |                  |            |
| Trade and other payables          | 8    | 131,068          | 143,020    |
| Employee provisions               | 9    | 44,968           | 47,893     |
| Other current liabilities         | 10   | 3,498,555        | 2,704,118  |
| <b>TOTAL CURRENT LIABILITITES</b> |      | <b>3,674,591</b> | 2,895,031  |
| <b>TOTAL LIABILITIES</b>          |      | <b>3,674,591</b> | 2,895,031  |
| <b>NET ASSETS</b>                 |      | <b>4,345,568</b> | 4,638,760  |
| <b>EQUITY</b>                     |      |                  |            |
| Retained earnings                 |      | 4,345,568        | 4,638,760  |
| <b>TOTAL EQUITY</b>               |      | <b>4,345,568</b> | 4,638,760  |

The accompanying notes form part of these financial statements.



STATEMENT OF CHANGES IN EQUITY  
FOR THE YEAR ENDED 30 JUNE 2024

|  | Retained<br>Surplus<br>\$ |
|--|---------------------------|
| Balance at 1 July 2022                 | 2,870,809                 |
| Comprehensive income                   |                           |
| Net surplus for the period             | <u>1,767,951</u>          |
| Balance at 1 July 2023                 | <u>4,638,760</u>          |
| Comprehensive income                   |                           |
| Net surplus / (deficit) for the period | <u>(293,192)</u>          |
| Balance at 30 June 2024                | <u><u>4,345,568</u></u>   |

The accompanying notes form part of these financial statements.

STATEMENT OF CASH FLOWS  
FOR THE YEAR ENDED 30 JUNE 2024

|  | Note | 2024<br>\$                     | 2023<br>\$       |
|--|------|--------------------------------|------------------|
| CASH FLOWS FROM OPERATING ACTIVITIES                       |      |                                |                  |
| Receipts from grants and customers                         |      | <b>2,329,738</b>               | 2,913,380        |
| Interest received  |      | <b>132,726</b>                 | 74,758           |
| GST paid to the ATO  |      | <b>(51,877)</b>                | 37,201           |
| Payments to suppliers, employees and hospitals             |      | <b>(2,977,295)</b>             | (2,532,999)      |
| Net cash receipts from operating activities                |      | <u><b>933,291</b></u>          | 492,340          |
| CASH FLOWS FROM INVESTING ACTIVITIES                       |      |                                |                  |
| Payments for investments                                   |      | <u><b>(72,701)</b></u>         | (83,630)         |
| Net cash disbursements from investing activities           |      | <u><b>(72,701)</b></u>         | (83,630)         |
| Net cash increase in cash held                             |      | <u><b>860,590</b></u>          | 408,710          |
| Cash and cash equivalents at beginning of financial period |      | <u><b>4,636,736</b></u>        | 4,228,026        |
| Cash and cash equivalents at end of financial period       | 4    | <u><u><b>5,497,326</b></u></u> | <u>4,636,736</u> |

The accompanying notes form part of these financial statements.



NOTES TO THE FINANCIAL STATEMENTS

NOTE 1: STATEMENT OF MATERIAL ACCOUNTING POLICIES

**Foundation Details**

Canberra Hospital Foundation Limited (the Foundation) applies Australian Accounting Standards – Simplified Disclosures as set out in AASB 1053: Application of Tiers of Australian Accounting Standards.

The Foundation previously operated under Canberra Hospital Services (CHS) but was established as a separate entity as at 1 February 2020. Funds were transferred from CHS upon commencement representing the funds controlled by the Foundation at this time.

**Basis of Preparation**

The financial statements are general purpose financial statements that have been prepared in accordance with Australian Accounting Standards – Simplified Disclosures of the Australian Accounting Standards Board (AASB) and the Australian Charities and Not-for-profits Commission Act 2012. The Foundation is a not-for-profit entity for financial reporting purposes under Australian Accounting Standards.

Australian Accounting Standards set out accounting policies that the AASB has concluded would result in financial statements containing relevant and reliable information about transactions, events and conditions. Material accounting policies adopted in the preparation of these financial statements are presented below and have been consistently applied unless stated otherwise.

The financial statements, except for the cash flow information, have been prepared on an accrual basis and are based on historical costs, modified, where applicable, by the measurement at fair value of selected non-current assets, financial assets and financial liabilities. The amounts presented in the financial statements have been rounded to the nearest dollar.

The financial statements were authorised for issue on \_\_\_\_\_ by the Directors of Canberra Hospital Foundation Limited.

**Accounting Policies**

a. **Revenue**

Canberra Hospital Foundation has applied AASB 15: Revenue from Contracts with Customers (AASB 15) and AASB 1058: Income of Not-for-Profit Entities (AASB 1058).

*Contributed Assets*

The Foundation receives assets from the government and other parties for nil or nominal consideration in order to further its objectives. These assets are recognised in accordance with the recognition requirements of other applicable accounting standards (for example AASB 9, AASB 16, AASB 116 and AASB 138.)

NOTES TO THE FINANCIAL STATEMENTS

NOTE 1: STATEMENT OF MATERIAL ACCOUNTING POLICIES

a. **Revenue (continued)**

On initial recognition of an asset, the Foundation recognises related amounts (being contributions by owners, lease liability, financial instruments, provisions, revenue or contract liability arising from a contract with a customer). The Foundation recognises income immediately in profit or loss as the difference between the initial carrying amount of the asset and the related amount.

*Operating Grants, Donations and Bequests*

When the Foundation receives operating grant revenue, donations or bequests, it assesses whether the contract is enforceable and has sufficiently specific performance obligations in accordance with AASB 15.

When both these conditions are satisfied, the Foundation:

- identifies each performance obligation relating to the grant;
- recognises a contract liability for its obligations under the agreement; and
- recognises revenue as it satisfies its performance obligations.

Where the contract is not enforceable or does not have sufficiently specific performance obligations, the Foundation:

- recognises the asset received in accordance with the recognition requirements of other applicable accounting standards (for example AASB 9, AASB 16, AASB 116 and AASB 138)
- recognises related amounts (being contributions by owners, lease liability, financial instruments, provisions, revenue or contract liability arising from a contract with a customer)
- recognises income immediately in profit or loss as the difference between the initial carrying amount of the asset and the related amount.

If a contract liability is recognised as a related amount above, the Foundation recognises income in profit or loss when or as it satisfies its obligations under the contract.

*Interest Income*

Interest income is recognised using the effective interest method.

All revenue is stated net of the amount of goods and services tax.



## NOTES TO THE FINANCIAL STATEMENTS

### NOTE 1: STATEMENT OF MATERIAL ACCOUNTING POLICIES

#### b. Financial Instruments

##### Initial recognition and measurement

Financial instruments are initially measured at fair value, when contractual rights or obligations exist. Subsequent to initial recognition these instruments are measured as set out below.

Fair value represents the price that would be received to sell an asset in an asset or paid to transfer a liability in an orderly transaction between market participants at the measurement date. Where available, quoted prices in an active market are used to determine fair value. In other circumstances, valuation techniques are adopted.

##### Classification and subsequent measurement

The classification of financial assets at initial recognition depends on the financial asset's contractual cash flow characteristics and the Foundation's business model for managing them. All of the Foundation's other financial instruments are classified and subsequently measured at amortised cost. The Foundation applies a simplified approach to calculating expected credit losses (ECL's) for financial assets held at amortised cost by recognising a loss allowance based on lifetime ECL's at each reporting date.

Amortised cost is calculated as:

- i. the amount at which the financial asset or financial liability is measured at initial recognition;
- ii. less principal repayments;
- iii. plus or minus the cumulative amortisation of the difference, if any, between the amount initially recognised and the maturity amount calculated using the effective interest method; and
- iv. less any reduction for impairment.
- v. fair value through profit or loss.
- vi. By default, all other financial assets that do not meet the measurement conditions of amortised cost and fair value through other comprehensive income are subsequently measured at fair value through profit or loss.

##### Derecognition

Financial assets are derecognised where the contractual rights to receipt of cash flows expires or the asset is transferred to another party whereby the Foundation no longer has any significant continuing involvement in the risks and benefits associated with the asset.

All the following criteria need to be satisfied for the derecognition of a financial asset:

- The right to receive cash flows from the asset has expired or been transferred.
- All risk and reward of ownership of the asset have been substantially transferred; and
- The foundation no longer controls the asset (i.e. has no practical ability to make unilateral decision to sell to a third party)

## NOTES TO THE FINANCIAL STATEMENTS

### NOTE 1: STATEMENT OF MATERIAL ACCOUNTING POLICIES

#### c. Impairment of Assets

At the end of each reporting period, the Foundation reviews the carrying amounts of its tangible and intangible assets to determine whether there is any indication that those assets have been impaired. If such an indication exists, the recoverable amount of the asset, being the higher of the asset's fair value less costs of disposal and value in use, is compared to the asset's carrying amount. Any excess of the asset's carrying amount over its recoverable amount is recognised in profit or loss.

Where the assets are not held primarily for their ability to generate net cash inflows – that is, they are specialised assets held for continuing use of their service capacity – the recoverable amounts are expected to be materially the same as fair value.

Where it is not possible to estimate the recoverable amount of an individual asset, the Foundation estimates the recoverable amount of the cash-generating unit to which the asset belongs.

Where an impairment loss on a revalued individual asset is identified, this is recognised against the revaluation surplus in respect of the same class of asset to the extent that the impairment loss does not exceed the amount in the revaluation surplus for that class of asset.

#### d. Employee Benefits

##### Short-term employee benefits

Provision is made for the Foundation's obligation for short-term employee benefits. Short-term employee benefits are benefits (other than termination benefits) that are expected to be settled wholly within 12 months after the end of the annual reporting period in which the employees render the related service, including wages, salaries and sick leave. Short-term employee benefits are measured at the (undiscounted) amounts expected to be paid when the obligation is settled.

The Foundation 's obligations for short-term employee benefits such as wages, salaries and sick leave are recognised as part of current trade and other payables in the statement of financial position.

##### Other long-term employee benefits

The Foundation classifies employees' long service leave and annual leave entitlements as other long-term employee benefits as they are not expected to be settled wholly within 12 months after the end of the annual reporting period in which the employees render the related service. Provision is made for the Foundation's obligation for other long-term employee benefits, which are measured at the present value of the expected future payments to be made to employees. Expected future payments incorporate anticipated future wage and salary levels, durations of service and employee departures, and are discounted at rates determined by reference to market yields at the end of the reporting period on high quality corporate bonds that have maturity dates that approximate the terms of the obligations. Upon the remeasurement of obligations for other long-term employee benefits, the net change in the obligation is recognised in profit or loss classified under employee benefits expense.



NOTES TO THE FINANCIAL STATEMENTS

NOTE 1: STATEMENT OF MATERIAL ACCOUNTING POLICIES

d. **Employee Benefits (continued)**

The Foundation's obligations for long-term employee benefits are presented as non-current liabilities in its statement of financial position, except where the Foundation does not have an unconditional right to defer settlement for at least 12 months after the end of the reporting period, in which case the obligations are presented as current liabilities.

**Retirement benefit obligations**

*Defined contribution superannuation benefits*

All employees of the Foundation receive defined contribution superannuation entitlements, for which the Foundation pays the fixed superannuation guarantee contribution (currently 11% of the employee's average ordinary salary) to the employee's superannuation fund of choice. All contributions in respect of employees' defined contribution entitlements are recognised as an expense when they become payable. The Foundation's obligation with respect to employees' defined contribution entitlements is limited to its obligation for any unpaid superannuation guarantee contributions at the end of the reporting period. All obligations for unpaid superannuation guarantee contributions are measured at the (undiscounted) amounts expected to be paid when the obligation is settled and are presented as current liabilities in the Foundation's statement of financial position.

e. **Cash and Cash Equivalents**

Cash and cash equivalents include cash on hand, deposits held at call with banks, other short-term highly liquid investments with original maturities of three months or less, and bank overdrafts. Bank overdrafts are shown within borrowings in current liabilities on the statement of financial position.

f. **Trade and Other Receivables**

Trade and other debtors include amounts due in relation to funding agreements. Receivables expected to be collected within 12 months of the end of the reporting period are classified as current assets. All other receivables are classified as non-current assets.

Accounts receivable are initially recognised at fair value and subsequently measured at amortised cost using the effective interest method, less any provision for impairment. Refer to Note 1(c) for further discussion on the determination of impairment losses.

g. **Goods and Services Tax (GST)**

Revenues, expenses and assets are recognised net of the amount of GST, except where the amount of GST incurred is not recoverable from the Australian Taxation Office (ATO).

Receivables and payables are stated inclusive of the amount of GST receivable or payable. The net amount of GST recoverable from, or payable to, the ATO is included with other receivables or payables in the statement of financial position.

NOTES TO THE FINANCIAL STATEMENTS

NOTE 1: STATEMENT OF MATERIAL ACCOUNTING POLICIES

h. **Goods and Services Tax (GST) (continued)**

Cash flows are presented on a gross basis. The GST components of cash flows arising from investing or financing activities, which are recoverable from or payable to the ATO, are presented as operating cash flows included in receipts from customers or payments to suppliers.

i. **Income Tax**

No provision for income tax has been raised as the Foundation is exempt from income tax under Div 50 of the Income Tax Assessment Act 1997.

j. **Provisions**

Provisions are recognised when the Foundation has a legal or constructive obligation, as a result of past events, for which it is probable that an outflow of economic benefits will result and that outflow can be reliably measured. Provisions recognised represent the best estimate of the amounts required to settle the obligation at the end of the reporting period.

k. **Comparative Figures**

Where required by Accounting Standards, comparative figures have been adjusted to conform with changes in presentation for the current financial year.

When the Foundation retrospectively applies an accounting policy, makes a retrospective restatement or reclassifies items in its financial statements, a third statement of financial position as at the beginning of the preceding period, in addition to the minimum comparative financial statements, must be disclosed.

l. **Trade and Other Payables**

Trade and other payables represent the liabilities for goods and services received by the Foundation during the reporting period that remain unpaid at the end of the reporting period. The balance is recognised as a current liability with the amounts normally paid within 30 days of recognition of the liability.

m. **Plant and Equipment**

During the previous financial year, the charity has entered into an agreement with Lennox motors to be provided with a vehicle. The vehicle is to be replaced every year with part of the purchase price provided as an in-kind contribution. The vehicle was fully depreciated in the previous year in line with the one-year use agreement.



NOTES TO THE FINANCIAL STATEMENTS

NOTE 1: STATEMENT OF MATERIAL ACCOUNTING POLICIES

n. **Critical Accounting Estimates and Judgements**

The Directors evaluate estimates and judgements incorporated into the financial statements based on historical knowledge and best available current information. Estimates assume a reasonable expectation of future events and are based on current trends and economic data, obtained both externally and within the Foundation.

**Key judgements**

(i) *Recognition of allocated but unpaid funding*

The Foundation allocates funds it receives through donations, fundraisers and grants across the public health services to help finance nonfunded equipment purchases, refurbishments, research and patient dedicated programs. This includes entering into agreements with different areas of Canberra Hospital to help finance specific refurbishment projects. Once an agreement is entered into, the Foundation records a liability and monitors funding which has been allocated and unpaid on a regular basis. There is judgement involved in determining the likelihood of a project commencing and estimating the projected future costs requirements.

(ii) *Performance obligations under AASB 15*

To identify a performance obligation under AASB 15, the agreement must be sufficiently specific to be able to determine when the obligation is satisfied. Management exercises judgement to determine whether the agreement is sufficiently specific by taking into account any conditions specified in the arrangement, explicit or implicit, regarding the promised goods or services. In making this assessment, management includes the nature/ type, cost/ value, quantity and the period of transfer related to the goods or services agreed.

(iii) *Employee benefits*

For the purpose of measurement, AASB 119: Employee Benefits defines obligations for short-term employee benefits as obligations expected to be settled wholly before 12 months after the end of the annual reporting period in which the employees render the related service. The Foundation expects that most employees will not use all of their annual leave entitlements in the same year in which they are earned or during the 12-month period that follows (despite an informal internal policy that requires annual leave to be used within 18 months), the Directors believe that obligations for annual leave entitlements satisfy the definition of other long-term employee benefits and, therefore, are required to be measured at the present value of the expected future payments to be made to employees.

o. **Acquisition of The Canberra Hospital Auxiliary Inc (CHA)**

The Foundation acquired CHA in February 2023 after CHA went into liquidation. CHA was responsible for running the gift shop within Canberra Hospital with this responsibility now part of the Foundation's operations. This acquisition occurred at no cost to the Foundation.

NOTES TO THE FINANCIAL STATEMENTS

NOTE 2: REVENUE AND OTHER INCOME

|                                | Note | 2024             | 2023             |
|--------------------------------|------|------------------|------------------|
|                                |      | \$               | \$               |
| Donations                      |      | 1,234,939        | 1,440,482        |
| Fundraising                    |      | 215,013          | 109,193          |
| Shop                           |      | 424,860          | 157,100          |
| Grant income                   |      | 1,170,168        | 1,024,313        |
| Bank interest                  |      | 132,726          | 74,758           |
| Agent fees                     |      | 34,854           | 58,315           |
| Recovered adjustment           | (a)  | 130,168          | 442,743          |
| Dividend received              |      | 136,810          | 156,633          |
| Unrealised gain on investments |      | 110,321          | 94,262           |
| Other revenue                  |      | -                | 15,112           |
|                                |      | <b>3,589,859</b> | <b>3,572,911</b> |

(a) The revenue adjustment displayed above relates funds which were allocated to projects across the hospital in prior financial years which were subsequently reversed. The reversal are due to a number of factors including that the funds allocated related to a project that did not proceed.

NOTE 3: KEY MANAGEMENT PERSONNEL COMPENSATION

The totals of remuneration paid to key management personnel (KMP) of the Foundation during the period are as follows:

|                           | 2024           | 2023           |
|---------------------------|----------------|----------------|
|                           | \$             | \$             |
| KMP – short term benefits | 570,447        | 445,000        |
|                           | <b>570,447</b> | <b>445,000</b> |

NOTE 4: CASH AND CASH EQUIVALENTS

|   | 2024             | 2023             |
|---|------------------|------------------|
|   | \$               | \$               |
| Cash at bank  | 5,495,237        | 4,634,240        |
| Petty cash  | 2,089            | 2,496            |
| Total cash on hand as stated in the statement of financial position and statement of cash flows | <b>5,497,326</b> | <b>4,636,736</b> |



NOTES TO THE FINANCIAL STATEMENTS

NOTE 5: TRADE AND OTHER RECEIVABLES

|  |      | 2024           | 2023           |
|--|------|----------------|----------------|
|  |      | \$             | \$             |
| Trade receivables  |      | 93,384         | 4,937          |
| Amount due from liquidators in relation to CHA acquisition | 1(o) | 820            | 527,041        |
| Donations due from merchant bank facility                  | (a)  | (502)          | 17,125         |
| Franking credits receivable                                |      | -              | 33,308         |
| GST receivable   |      | 10,773         | 9,145          |
|  |      | <u>104,475</u> | <u>591,556</u> |

NOTE 6: INVENTORY

As part of its operations, the Foundation receives donations of books, toys and other inventory that are gifted to different areas of the hospital when required. This inventory is received and given away for no consideration and is not recorded in the financial statements.

The amounts recorded as inventory on the balance sheet represent items which have been purchased for distribution.

|           | 2024          | 2023          |
|-----------|---------------|---------------|
|           | \$            | \$            |
| Inventory | 54,647        | 73,830        |
|           | <u>54,647</u> | <u>73,830</u> |

NOTE 7: FINANCIAL ASSETS

|                                   | 2024             | 2023             |
|-----------------------------------|------------------|------------------|
|                                   | \$               | \$               |
| Investment with The Greater Good  | 62,026           | 57,710           |
| Investment with Shaw and Partners | 2,269,588        | 2,090,882        |
|                                   | <u>2,331,614</u> | <u>2,148,952</u> |

The financial assets balance is made up of an investment fund set up with 'The Greater Good'. This gives members of the public the opportunity to bequest or donate to Canberra Hospital Foundation. Any gains or losses in the investment are reflected through the statement of profit or loss.

NOTE 8: TRADE AND OTHER PAYABLES

|                             | 2024           | 2023           |
|-----------------------------|----------------|----------------|
|                             | \$             | \$             |
| Trade payables and accruals | 120,654        | 129,882        |
| PAYG payable                | 10,414         | 13,138         |
|                             | <u>131,068</u> | <u>143,020</u> |

NOTES TO THE FINANCIAL STATEMENTS

NOTE 9: EMPLOYEE PROVISIONS

|   | 2024          | 2023          |
|---|---------------|---------------|
|   | \$            | \$            |
| Provision for annual leave, long-service leave and personal leave | 44,968        | 47,893        |
|   | <u>44,968</u> | <u>47,893</u> |

The provision for employee benefits represents amounts accrued for annual leave and long service leave. Canberra Hospital Foundation expects the full amount of the annual leave balance to be settled within the next 12 months. Further, these amounts must be classified as current liabilities since the Foundation does not have an unconditional right to defer the settlement of these amounts in the event employees wish to use their leave entitlements.

Long service leave entitlements are provided for within the Statement of Financial Position based on the estimated probability of an employee reaching the minimum vesting period (i.e. 7 years).

NOTE 10: OTHER CURRENT LIABILITIES

|  | 2024             | 2023             |
|--|------------------|------------------|
|  | \$               | \$               |
| Allocated and unspent funds                            | 2,903,010        | 1,633,913        |
| Income in advance                                      | 320,205          | 282,885          |
| CHS / ACT Government Operational Grant unearned income | 275,340          | 787,320          |
|  | <u>3,498,555</u> | <u>2,704,118</u> |

Allocated and unspent funds at period end represent amounts committed to different areas of the hospital which have not yet been paid.

NOTE 11: RELATED PARTY TRANSACTIONS

As at balance date the Foundation has no known related party transactions.

NOTE 12: CONTINGENT LIABILITIES AND CONTINGENT ASSETS

As at balance date the Foundation has no known contingent liabilities or contingent assets.



## NOTES TO THE FINANCIAL STATEMENTS

### NOTE 13: FINANCIAL RISK MANAGEMENT

The Foundation's financial instruments consist mainly of deposits with banks accounts receivable and payable.

The carrying amounts for each category of financial instruments, measured in accordance with AASB 9: Financial Instruments as detailed in the accounting policies to these financial statements, are as follows:

|   | Note | 2024<br>\$       | 2023<br>\$       |
|---|------|------------------|------------------|
| <i>Financial assets</i>                       |      |                  |                  |
| Cash and cash equivalents                     | 4    | 5,497,326        | 4,636,736        |
| Trade and other receivables                   | 5    | 104,475          | 591,556          |
|   |      | <b>5,601,523</b> | <b>5,228,292</b> |
| <i>Financial liabilities</i>                  |      |                  |                  |
| Trade payables and accruals at amortised cost | 8    | 131,068          | 143,020          |
|   |      | <b>131,068</b>   | <b>143,020</b>   |

### NOTE 14: ENTITY DETAILS

The Foundation is registered and domiciled within Australia. The principal place of business and registered office is:

Canberra Hospital Foundation  
Level 2, Building 3, Canberra Hospital  
Yamba Drive, Garran ACT 2605

### NOTE 15: AUDITOR REMUNERATION

|  | 2024<br>\$    | 2023<br>\$    |
|--|---------------|---------------|
| Remuneration of the auditor:                     |               |               |
| – auditing or reviewing the financial statements | 15,225        | 14,500        |
| – other  | 2,625         | 2,500         |
|  | <b>17,850</b> | <b>17,000</b> |



## INDEPENDENT AUDITOR'S REPORT TO THE DIRECTORS OF CANBERRA HOSPITAL FOUNDATION LIMITED

### Report on the Audit of the Financial Report

#### Opinion

We have audited the accompanying financial report of Canberra Hospital Foundation Limited (the Foundation), which comprises the statement of financial position as at 30 June 2024, the statement of profit or loss, statement of comprehensive income, statement of changes in equity and statement of cash flows for the year then ended, notes comprising a summary of material accounting policies and other explanatory information, and the director's declaration.

In our opinion, the accompanying financial report of Canberra Hospital Foundation Limited has been prepared in accordance with Division 60 of the *Australian Charities and Not-for-profits Commission Act 2012* (the ACNC Act), including:

- giving a true and fair view of the Association's financial position as at 30 June 2024 and of its financial performance for the year then ended; and
- complying with Australian Accounting Standards – AASB 1060: *General Purpose Financial Statements – Simplified Disclosures for For-Profit and Not-for-Profit Tier 2 Entities* and Division 60 of the *Australian Charities and Not-for-profits Commission Regulation 2013*.

#### Basis for Opinion

We conducted our audit in accordance with Australian Auditing Standards. Our responsibilities under those standards are further described in the Auditor's Responsibilities for the Audit of the Financial Report section of our report. We are independent of the registered entity in accordance with the ACNC Act and ethical requirements of the Accounting Professional and Ethical Standards Board's APES 110 *Code of Ethics for Professional Accountants (including Independence Standards)* (the Code) that are relevant to our audit of the financial report in Australia. We have also fulfilled our other ethical responsibilities in accordance with the Code.

We believe that the audit evidence we have obtained is sufficient and appropriate to provide a basis for our opinion.

#### Information Other than the Financial Report and Auditor's Report Thereon

The directors are responsible for the other information. The other information comprises the information included in the annual report for the year ended 30 June 2024 but does not include the financial report and our auditor's report thereon. Our opinion on the financial report does not cover the other information and accordingly we do not express any form of assurance conclusion thereon. In connection with our audit of the financial report, our responsibility is to read the other information and, in doing so, consider whether the other information is materially inconsistent with the financial report or our knowledge obtained in the audit or otherwise appears to be materially misstated. If, based on the work we have performed, we conclude that there is a material misstatement of this other information, we are required to report that fact. We have nothing to report in this regard.

#### Responsibilities of the Committee for the Financial Report

The directors of the registered entity are responsible for the preparation of the financial report that gives a true and fair view in accordance with Australian Accounting Standards – Simplified Disclosures and the *Australian Charities and Not-for-profits Commission Act 2012* and for such internal control as the directors determines is necessary to enable the preparation of the financial report that gives a true and fair view and is free from material misstatement, whether due to fraud or error.

In preparing the financial report, the directors is responsible for assessing the ability of the registered entity to continue as a going concern, disclosing, as applicable, matters related to going concern and using the going concern basis of accounting unless the directors either intends to liquidate the registered entity or to cease operations, or has no realistic alternative but to do so.

The directors is responsible for overseeing the registered entity's financial reporting process.



## INDEPENDENT AUDITOR'S REPORT TO THE DIRECTORS OF CANBERRA HOSPITAL FOUNDATION LIMITED

### Auditor's Responsibility for the Audit of the Financial Report

Our objectives are to obtain reasonable assurance about whether the financial report as a whole is free from material misstatement, whether due to fraud or error, and to issue an auditor's report that includes our opinion. Reasonable assurance is a high level of assurance but is not a guarantee that an audit conducted in accordance with the Australian Auditing Standards will always detect a material misstatement when it exists. Misstatements can arise from fraud or error and are considered material if, individually or in the aggregate, they could reasonably be expected to influence the economic decisions of users taken on the basis of this financial report.

As part of an audit in accordance with the Australian Auditing Standards, we exercise professional judgement and maintain professional scepticism throughout the audit. We also:

- Identify and assess the risks of material misstatement of the financial report, whether due to fraud or error, design and perform audit procedures responsive to those risks, and obtain audit evidence that is sufficient and appropriate to provide a basis for our opinion. The risk of not detecting a material misstatement resulting from fraud is higher than for one resulting from error, as fraud may involve collusion, forgery, intentional omissions, misrepresentations, or the override of internal control.
- Obtain an understanding of internal control relevant to the audit in order to design audit procedures that are appropriate in the circumstances, but not for the purpose of expressing an opinion on the effectiveness of the registered entity's internal control.
- Evaluate the appropriateness of accounting policies used and the reasonableness of accounting estimates and related disclosures made by the directors.
- Conclude on the appropriateness of the directors' use of the going concern basis of accounting and, based on the audit evidence obtained, whether a material uncertainty exists related to events or conditions that may cast significant doubt on the registered entity's ability to continue as a going concern. If we conclude that a material uncertainty exists, we are required to draw attention in our auditor's report to the related disclosures in the financial report or, if such disclosures are inadequate, to modify our opinion. Our conclusions are based on the audit evidence obtained up to the date of our auditor's report. However, future events or conditions may cause the registered entity to cease to continue as a going concern.
- Evaluate the overall presentation, structure and content of the financial report, including the disclosures, and whether the financial report represents the underlying transactions and events in a manner that achieves fair presentation.

We communicate with the directors regarding, among other matters, the planned scope and timing of the audit and significant audit findings, including any significant deficiencies in internal control that we identify during our audit.



BellchambersBarrett



Sart Spinks, CA  
Registered Company Auditor  
BellchambersBarrett

Canberra, ACT  
Dated this 26<sup>th</sup> day of November 2024

*Liability limited by a scheme approved under Professional Standards Legislation*



Rehabilitation patient Robert Wells using the Armeo Spring with Physiotherapist Amy Webb





**CANBERRA  
HOSPITAL  
FOUNDATION**

**CANBERRA HOSPITAL FOUNDATION**

PO Box 11, Woden ACT 2606  
P: 02 5124 3542  
E: [hello@chfoundation.org.au](mailto:hello@chfoundation.org.au)

Shopfront Office Level 2, Building 3  
Canberra Hospital  
Yamba Drive, Garran ACT 2605  
[www.canberrahospitalfoundation.org.au](http://www.canberrahospitalfoundation.org.au)